

## Product datasheet for **TA388620**

### SLC52A3 Rabbit Polyclonal Antibody

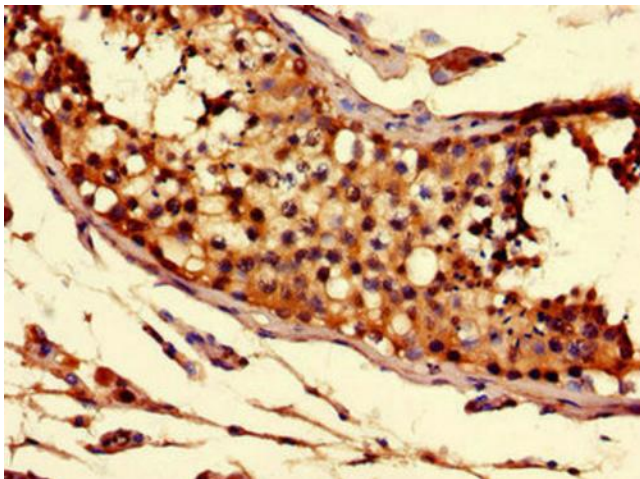
#### Product data:

Product Type:	Primary Antibodies
Applications:	IF, IHC, WB
Recommended Dilution:	Recommended dilution: WB:1:1000-1:5000, IHC:1:20-1:200, IF:1:50-1:200
Reactivity:	Mouse, Human
Host:	Rabbit
Isotype:	IgG
Clonality:	Polyclonal
Immunogen:	Recombinant Human Solute carrier family 52, riboflavin transporter, member 3 protein (159-220AA)
Formulation:	Preservative: 0.03% Proclin 300 Constituents: 50% Glycerol, 0.01M PBS, PH 7.4
Concentration:	lot specific
Purification:	>95%, Protein G purified
Conjugation:	Unconjugated
Storage:	Upon receipt, store at -20°C or -80°C. Avoid repeated freeze.
Stability:	1 year from dispatch.
Database Link:	<a href="#">Q9NQ40</a>
Background:	Transporter for riboflavin, which must be obtained as a nutrient via intestinal absorption. Riboflavin transport is Na(+)-independent at low pH but significantly reduced by Na(+) depletion under neutral pH conditions. Activity is strongly inhibited by riboflavin analogs, such as lumiflavin, flavin mononucleotide (FMN), flavin adenine dinucleotide (FAD), by methylene blue, and to a lesser extent by amiloride.

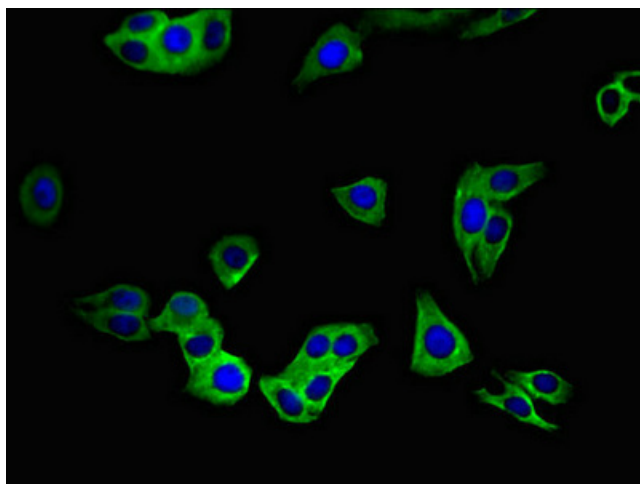


[View online »](#)

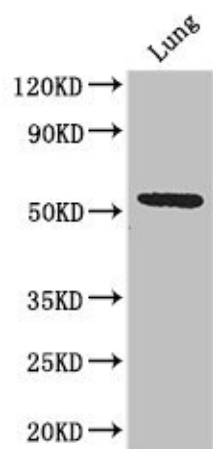
## Product images:



Immunohistochemistry of paraffin-embedded human testis tissue using TA388620 at dilution of 1:100



Immunofluorescent analysis of HepG2 cells using TA388620 at dilution of 1:100 and Alexa Fluor 488-conjugated AffiniPure Goat Anti-Rabbit IgG(H+L)



Western Blot

Positive WB detected in: Mouse lung tissue

All lanes: Q9NQ4 antibody at 3.2µg/ml

Secondary

Goat polyclonal to rabbit IgG at 1/50000 dilution

Predicted band size: 51, 46 kDa

Observed band size: 51 kDa