

Product datasheet for **TA388619M**

ZDHHC4 Rabbit Polyclonal Antibody

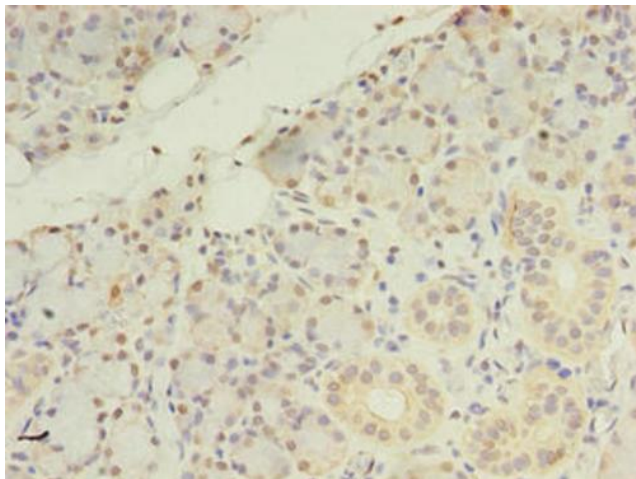
Product data:

Product Type:	Primary Antibodies
Applications:	IHC, WB
Recommended Dilution:	Recommended dilution: WB:1:500-1:2000, IHC:1:20-1:200
Reactivity:	Mouse, Human
Host:	Rabbit
Isotype:	IgG
Clonality:	Polyclonal
Immunogen:	Recombinant Human Probable palmitoyltransferase ZDHHC4 protein (277-344AA)
Formulation:	Preservative: 0.03% Proclin 300 Constituents: 50% Glycerol, 0.01M PBS, PH 7.4
Concentration:	lot specific
Purification:	Antigen Affinity Purified
Conjugation:	Unconjugated
Storage:	Upon receipt, store at -20°C or -80°C. Avoid repeated freeze.
Stability:	1 year from dispatch.
Database Link:	Q9NPG8
Background:	endoplasmic reticulum, Golgi apparatus, protein-cysteine S-palmitoyltransferase activity, peptidyl-L-cysteine S-palmitoylation, protein targeting to membrane

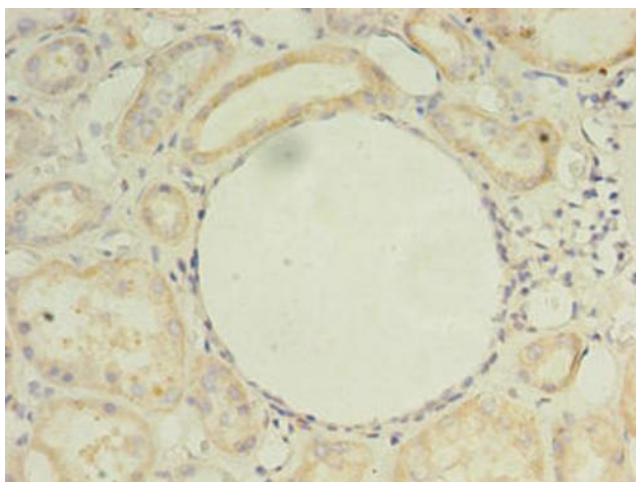


[View online »](#)

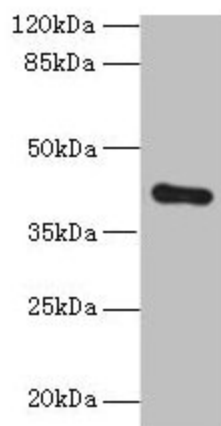
Product images:



Immunohistochemistry of paraffin-embedded human pancreatic tissue using [TA388619] at dilution of 1:100



Immunohistochemistry of paraffin-embedded human kidney tissue using [TA388619] at dilution of 1:100



Western blot

All lanes: ZDHHC4 antibody at 1.5µg/ml + Mouse liver tissue

Secondary

Goat polyclonal to rabbit IgG at 1/10000 dilution

Predicted band size: 40 kDa

Observed band size: 40 kDa