

Product datasheet for **TA388619**

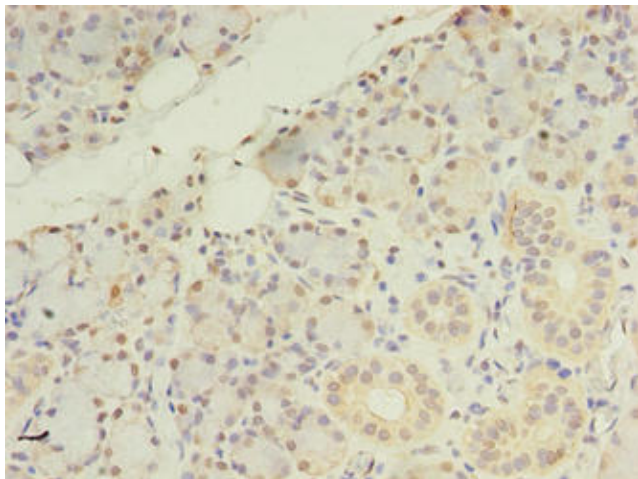
ZDHHC4 Rabbit Polyclonal Antibody

Product data:

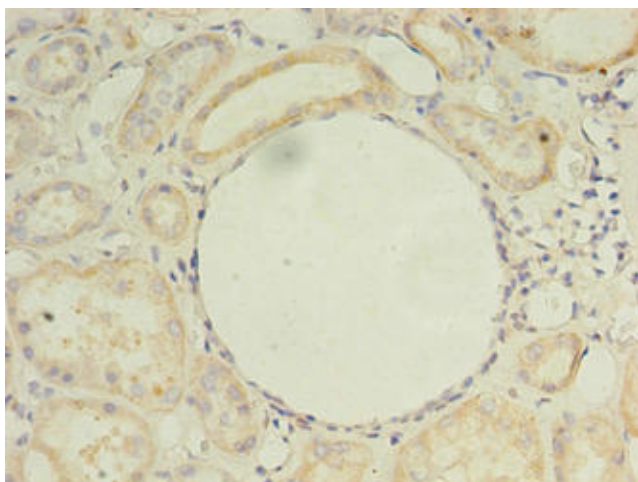
| | |
|-----------------------|---|
| Product Type: | Primary Antibodies |
| Applications: | IHC, WB |
| Recommended Dilution: | Recommended dilution: WB:1:500-1:2000, IHC:1:20-1:200 |
| Reactivity: | Mouse, Human |
| Host: | Rabbit |
| Isotype: | IgG |
| Clonality: | Polyclonal |
| Immunogen: | Recombinant Human Probable palmitoyltransferase ZDHHC4 protein (277-344AA) |
| Formulation: | Preservative: 0.03% Proclin 300 Constituents: 50% Glycerol, 0.01M PBS, PH 7.4 |
| Concentration: | lot specific |
| Purification: | Antigen Affinity Purified |
| Conjugation: | Unconjugated |
| Storage: | Upon receipt, store at -20°C or -80°C. Avoid repeated freeze. |
| Stability: | 1 year from dispatch. |
| Database Link: | Q9NPG8 |
| Background: | endoplasmic reticulum, Golgi apparatus, protein-cysteine S-palmitoyltransferase activity, peptidyl-L-cysteine S-palmitoylation, protein targeting to membrane |



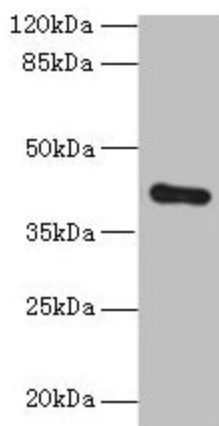
[View online »](#)

Product images:

Immunohistochemistry of paraffin-embedded human pancreatic tissue using TA388619 at dilution of 1:100



Immunohistochemistry of paraffin-embedded human kidney tissue using TA388619 at dilution of 1:100



Western blot

All lanes: ZDHHC4 antibody at 1.5 μ g/ml + Mouse liver tissue

Secondary

Goat polyclonal to rabbit IgG at 1/10000 dilution

Predicted band size: 40 kDa

Observed band size: 40 kDa