

## Product datasheet for **TA388617M**

### **TMEM165 Rabbit Polyclonal Antibody**

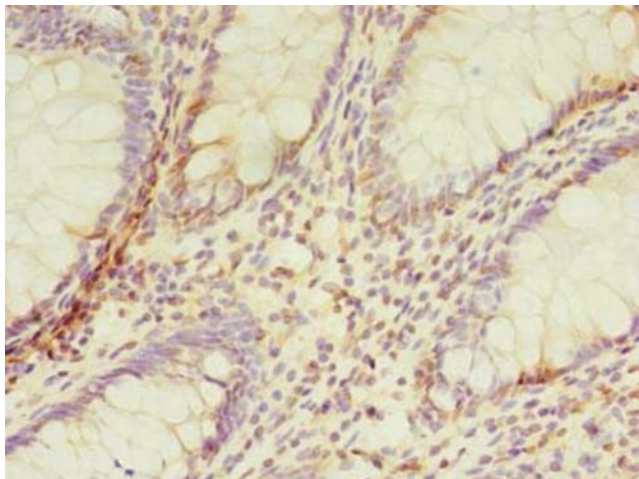
#### **Product data:**

Product Type:	Primary Antibodies
Applications:	IF, IHC, WB
Recommended Dilution:	Recommended dilution: WB:1:500-1:2000, IHC:1:20-1:200, IF:1:50-1:200
Reactivity:	Human
Host:	Rabbit
Isotype:	IgG
Clonality:	Polyclonal
Immunogen:	Recombinant Human Transmembrane protein 165 protein (173-228AA)
Formulation:	Preservative: 0.03% Proclin 300 Constituents: 50% Glycerol, 0.01M PBS, PH 7.4
Concentration:	lot specific
Purification:	>95%, Protein G purified
Conjugation:	Unconjugated
Storage:	Upon receipt, store at -20°C or -80°C. Avoid repeated freeze.
Stability:	1 year from dispatch.
Database Link:	<a href="#">Q9HC07</a>
Background:	May function as a calcium/proton transporter involved in calcium and in lysosomal pH homeostasis. Therefore, it may play an indirect role in protein glycosylation.

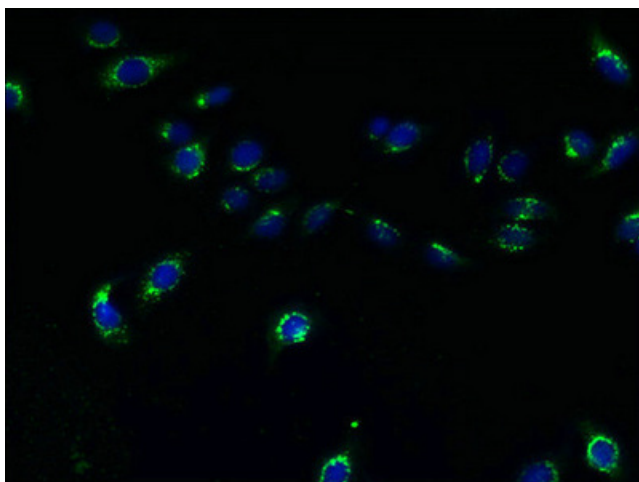


[View online »](#)

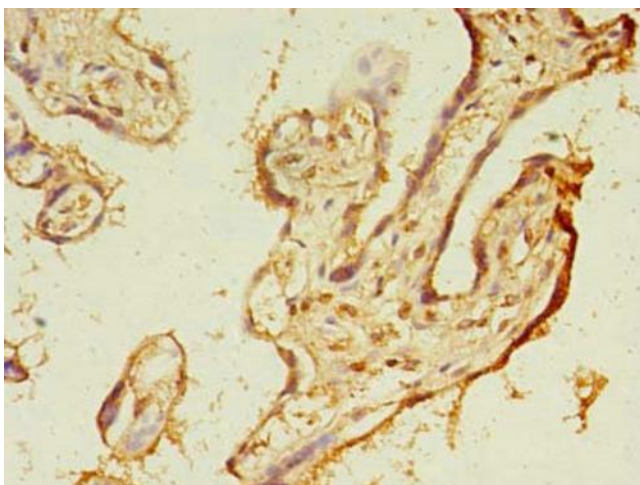
## Product images:



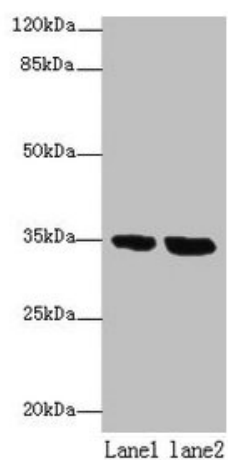
Immunohistochemistry of paraffin-embedded human colon cancer using [TA388617] at dilution of 1:100



Immunofluorescent analysis of HepG2 cells using [TA388617] at dilution of 1:100 and Alexa Fluor 488-conjugated AffiniPure Goat Anti-Rabbit IgG(H+L)



Immunohistochemistry of paraffin-embedded human placenta tissue using [TA388617] at dilution of 1:100



Western blot  
All lanes: TMEM165 antibody at 8 $\mu$ g/ml  
Lane 1: Jurkat whole cell lysate  
Lane 2: HeLa whole cell lysate  
Secondary  
Goat polyclonal to rabbit IgG at 1/10000 dilution  
Predicted band size: 35, 29 kDa  
Observed band size: 35 kDa