

Product datasheet for **TA388616M**

SUGCT Rabbit Polyclonal Antibody

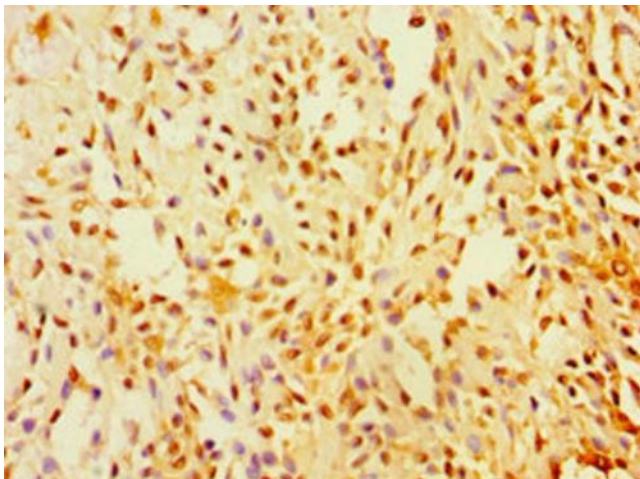
Product data:

Product Type:	Primary Antibodies
Applications:	IHC, WB
Recommended Dilution:	Recommended dilution: WB:1:500-1:2000, IHC:1:20-1:200
Reactivity:	Mouse, Human
Host:	Rabbit
Isotype:	IgG
Clonality:	Polyclonal
Immunogen:	Recombinant Human Succinate--hydroxymethylglutarate CoA-transferase protein (1-250AA)
Formulation:	PBS with 0.02% sodium azide, 50% glycerol, pH7.3.
Concentration:	lot specific
Purification:	Antigen Affinity Purified
Conjugation:	Unconjugated
Storage:	Upon receipt, store at -20°C or -80°C. Avoid repeated freeze.
Stability:	1 year from dispatch.
Database Link:	<u>Q9HAC7</u>
Background:	Catalyzes the succinyl-CoA-dependent conversion of glutarate to glutaryl-CoA. Can use different dicarboxylic acids as CoA acceptors, the preferred ones are glutarate, succinate, adipate, and 3-hydroxymethylglutarate.

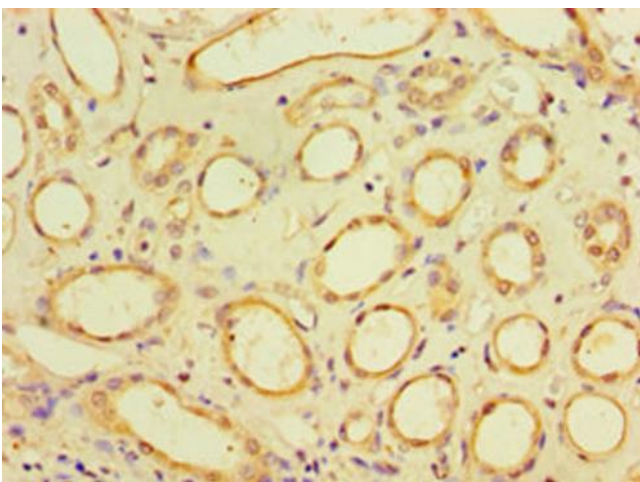


[View online »](#)

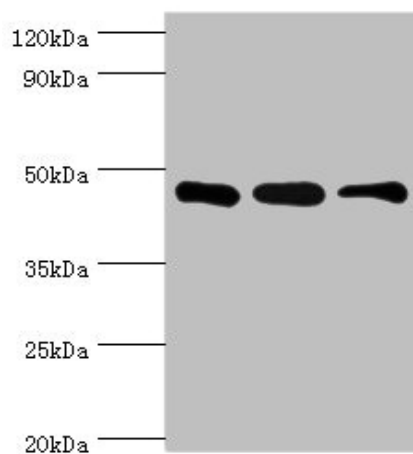
Product images:



Immunohistochemistry of paraffin-embedded human breast cancer using [TA388616] at dilution of 1:100



Immunohistochemistry of paraffin-embedded human kidney tissue using [TA388616] at dilution of 1:100



Western blot

All lanes: SUGCT antibody at 16µg/ml

Lane 1: Mouse skeletal muscle tissue

Lane 2: Mouse liver tissue

Lane 3: Mouse kidney tissue

Secondary

Goat polyclonal to rabbit IgG at 1/10000 dilution

Predicted band size: 49, 48, 52, 44 kDa

Observed band size: 42 kDa