

## Product datasheet for **TA388613**

### **DHX35 Rabbit Polyclonal Antibody**

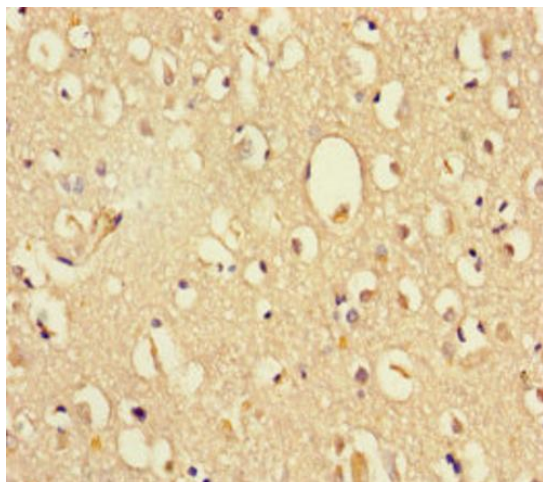
#### **Product data:**

Product Type:	Primary Antibodies
Applications:	IHC, WB
Recommended Dilution:	Recommended dilution: WB:1:1000-1:5000, IHC:1:20-1:200
Reactivity:	Mouse, Human
Host:	Rabbit
Isotype:	IgG
Clonality:	Polyclonal
Immunogen:	Recombinant Human Probable ATP-dependent RNA helicase DHX35 protein (1-300AA)
Formulation:	Preservative: 0.03% Proclin 300 Constituents: 50% Glycerol, 0.01M PBS, PH 7.4
Concentration:	lot specific
Purification:	>95%, Protein G purified
Conjugation:	Unconjugated
Storage:	Upon receipt, store at -20°C or -80°C. Avoid repeated freeze.
Stability:	1 year from dispatch.
Database Link:	<a href="#">Q9H5Z1</a>
Background:	May be involved in pre-mRNA splicing.

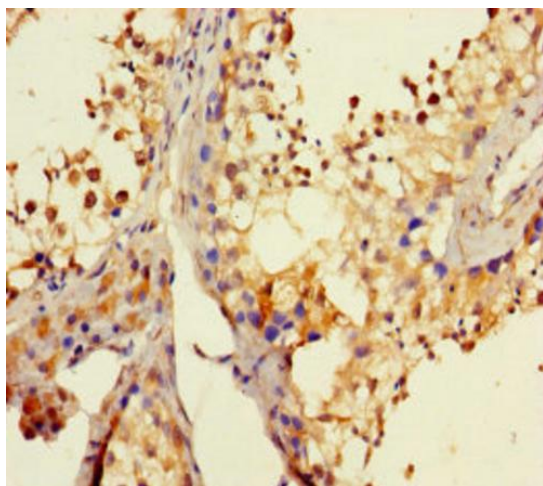


[View online »](#)

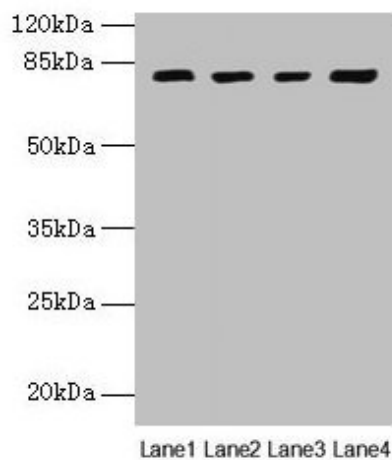
**Product images:**



Immunohistochemistry of paraffin-embedded human brain tissue using TA388613 at dilution of 1:100



Immunohistochemistry of paraffin-embedded human testis tissue using TA388613 at dilution of 1:100



## Western blot

All lanes: DHX35 antibody at 12µg/ml

Lane 1: Mouse kidney tissue

Lane 2: Mouse liver tissue

Lane 3: K562 whole cell lysate

Lane 4: Hela whole cell lysate

## Secondary

Goat polyclonal to rabbit IgG at 1/10000 dilution

Predicted band size: 79, 76 kDa

Observed band size: 79 kDa