

Product datasheet for **TA388612**

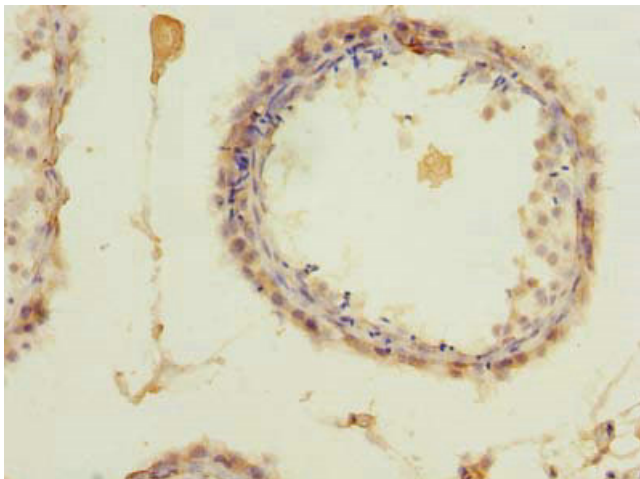
ZCCHC4 Rabbit Polyclonal Antibody

Product data:

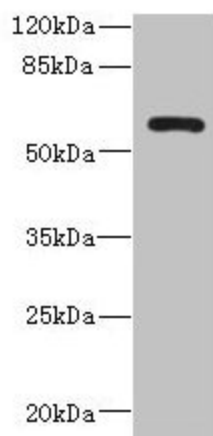
Product Type:	Primary Antibodies
Applications:	IHC, WB
Recommended Dilution:	Recommended dilution: WB:1:500-1:2000, IHC:1:20-1:200
Reactivity:	Human
Host:	Rabbit
Isotype:	IgG
Clonality:	Polyclonal
Immunogen:	Recombinant Human Zinc finger CCHC domain-containing protein 4 protein (25-229AA)
Formulation:	Preservative: 0.03% Proclin 300 Constituents: 50% Glycerol, 0.01M PBS, PH 7.4
Concentration:	lot specific
Purification:	Antigen Affinity Purified
Conjugation:	Unconjugated
Storage:	Upon receipt, store at -20°C or -80°C. Avoid repeated freeze.
Stability:	1 year from dispatch.
Database Link:	Q9H5U6
Background:	May be a methyltransferase.



[View online »](#)

Product images:

Immunohistochemistry of paraffin-embedded human testis tissue using TA388612 at dilution of 1:100



Western blot
All lanes: ZCCHC4 antibody at 0.6 μ g/ml + A431 whole cell lysate
Secondary
Goat polyclonal to rabbit IgG at 1/10000 dilution
Predicted band size: 60, 26, 59 kDa
Observed band size: 60 kDa