

Product datasheet for **TA388609M**

C11orf68 Rabbit Polyclonal Antibody

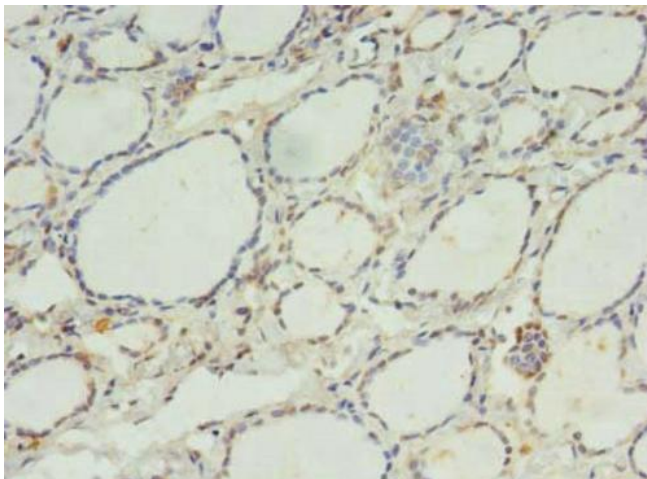
Product data:

Product Type:	Primary Antibodies
Applications:	IHC, WB
Recommended Dilution:	Recommended dilution: WB:1:500-1:2000, IHC:1:20-1:200
Reactivity:	Mouse, Human
Host:	Rabbit
Isotype:	IgG
Clonality:	Polyclonal
Immunogen:	Recombinant Human UPF0696 protein C11orf68 protein (1-251AA)
Formulation:	Preservative: 0.03% Proclin 300 Constituents: 50% Glycerol, 0.01M PBS, PH 7.4
Concentration:	lot specific
Purification:	>95%, Protein G purified
Conjugation:	Unconjugated
Storage:	Upon receipt, store at -20°C or -80°C. Avoid repeated freeze.
Stability:	1 year from dispatch.
Database Link:	Q9H3H3
Background:	poly(A) RNA binding

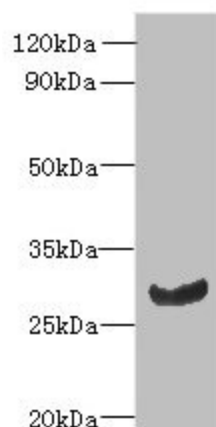


[View online »](#)

Product images:



Immunohistochemistry of paraffin-embedded human thyroid tissue using [TA388609] at dilution of 1:100



Western blot
All lanes: C11orf68 antibody at 3µg/ml + Mouse liver tissue
Secondary
Goat polyclonal to rabbit IgG at 1/10000 dilution
Predicted band size: 28, 32 kDa
Observed band size: 28 kDa