

Product datasheet for **TA388606**

SLC25A18 Rabbit Polyclonal Antibody

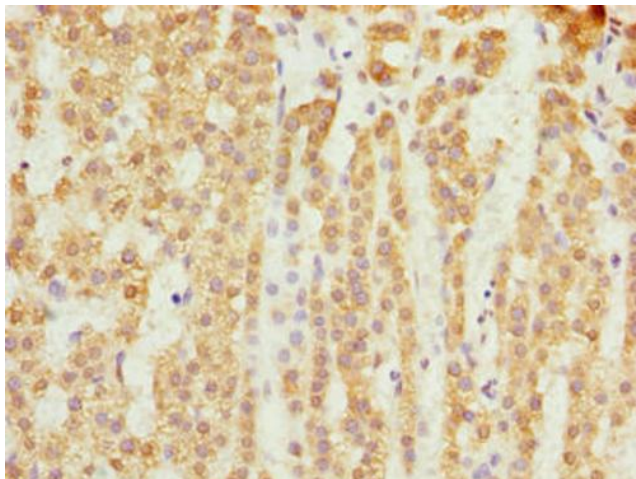
Product data:

Product Type:	Primary Antibodies
Applications:	IF, IHC, WB
Recommended Dilution:	Recommended dilution: WB:1:500-1:2000, IHC:1:20-1:200, IF:1:50-1:200
Reactivity:	Human
Host:	Rabbit
Isotype:	IgG
Clonality:	Polyclonal
Immunogen:	Recombinant Human Mitochondrial glutamate carrier 2 protein (246-287AA)
Formulation:	Preservative: 0.03% Proclin 300 Constituents: 50% Glycerol, 0.01M PBS, PH 7.4
Concentration:	lot specific
Purification:	>95%, Protein G purified
Conjugation:	Unconjugated
Storage:	Upon receipt, store at -20°C or -80°C. Avoid repeated freeze.
Stability:	1 year from dispatch.
Database Link:	Q9H1K4
Background:	Involved in the transport of glutamate across the inner mitochondrial membrane. Glutamate is cotransported with H(+).

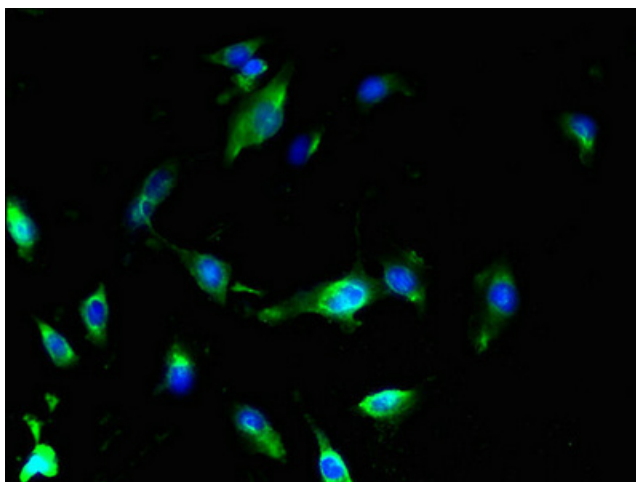


[View online »](#)

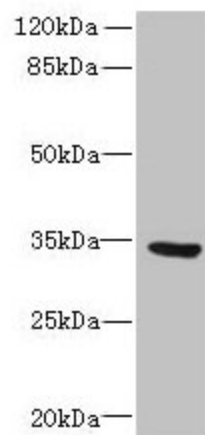
Product images:



Immunohistochemistry of paraffin-embedded human adrenal gland tissue using TA388606 at dilution of 1:100



Immunofluorescent analysis of U251 cells using TA388606 at dilution of 1:100 and Alexa Fluor 488-conjugated AffiniPure Goat Anti-Rabbit IgG(H+L)



Western blot

All lanes: SLC25A18 antibody at 0.3 μ g/ml + U87 whole cell lysate

Secondary

Goat polyclonal to rabbit IgG at 1/10000 dilution

Predicted band size: 34 kDa

Observed band size: 34 kDa