

## Product datasheet for **TA388601M**

### CEP44 Rabbit Polyclonal Antibody

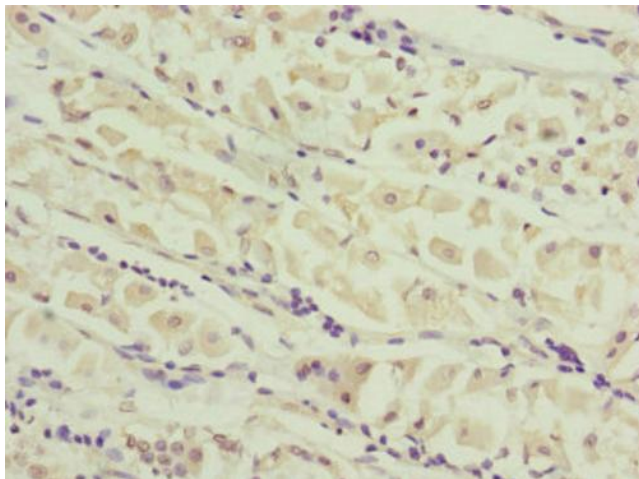
#### Product data:

Product Type:	Primary Antibodies
Applications:	IHC, WB
Recommended Dilution:	Recommended dilution: WB:1:1000-1:5000, IHC:1:20-1:200
Reactivity:	Human
Host:	Rabbit
Isotype:	IgG
Clonality:	Polyclonal
Immunogen:	Recombinant Human Centrosomal protein of 44 kDa protein (1-280AA)
Formulation:	PBS with 0.02% sodium azide, 50% glycerol, pH7.3.
Concentration:	lot specific
Purification:	Antigen Affinity Purified
Conjugation:	Unconjugated
Storage:	Upon receipt, store at -20°C or -80°C. Avoid repeated freeze.
Stability:	1 year from dispatch.
Database Link:	<a href="#">Q9C0F1</a>
Background:	centrosome, midbody, spindle pole

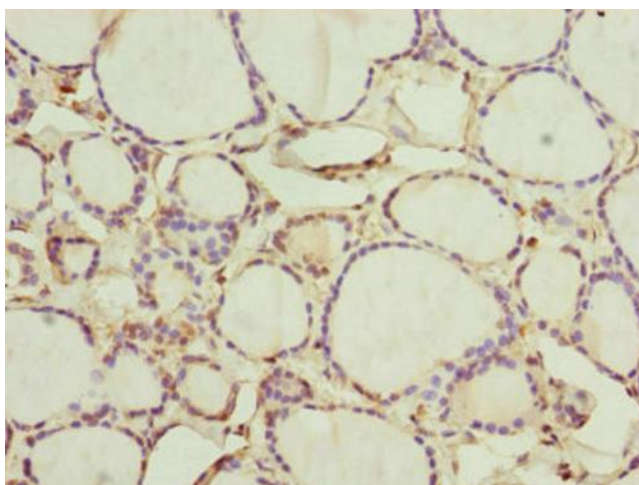


[View online »](#)

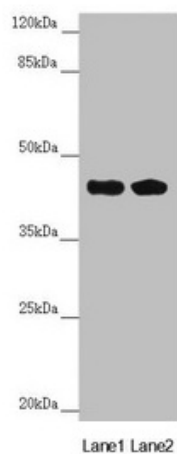
## Product images:



Immunohistochemistry of paraffin-embedded human gastric cancer using [TA388601] at dilution of 1:100



Immunohistochemistry of paraffin-embedded human thyroid tissue using [TA388601] at dilution of 1:100



## Western blot

All lanes: CEP44 antibody at 6.92µg/ml

Lane 1: Jurkat whole cell lysate

Lane 2: MCF-7 whole cell lysate

Secondary

Goat polyclonal to rabbit IgG at 1/10000 dilution

Predicted band size: 44 kDa

Observed band size: 44 kDa