

Product datasheet for **TA388591M**

AGPAT1 Rabbit Polyclonal Antibody

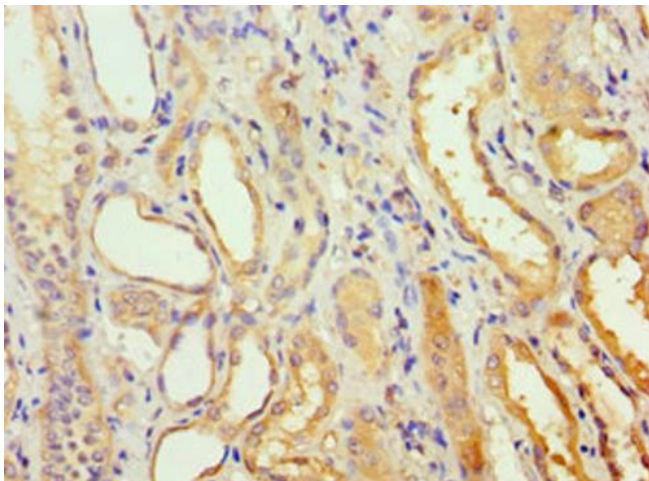
Product data:

Product Type:	Primary Antibodies
Applications:	IHC, WB
Recommended Dilution:	Recommended dilution: WB:1:200-1:1000, IHC:1:20-1:200
Reactivity:	Human
Host:	Rabbit
Isotype:	IgG
Clonality:	Polyclonal
Immunogen:	Recombinant Human 1-acyl-sn-glycerol-3-phosphate acyltransferase alpha protein (204-283AA)
Formulation:	PBS with 0.02% sodium azide, 50% glycerol, pH7.3.
Concentration:	lot specific
Purification:	Antigen Affinity Purified
Conjugation:	Unconjugated
Storage:	Upon receipt, store at -20°C or -80°C. Avoid repeated freeze.
Stability:	1 year from dispatch.
Database Link:	Q99943
Background:	Converts lysophosphatidic acid (LPA) into phosphatidic acid by incorporating an acyl moiety at the sn-2 position of the glycerol backbone.

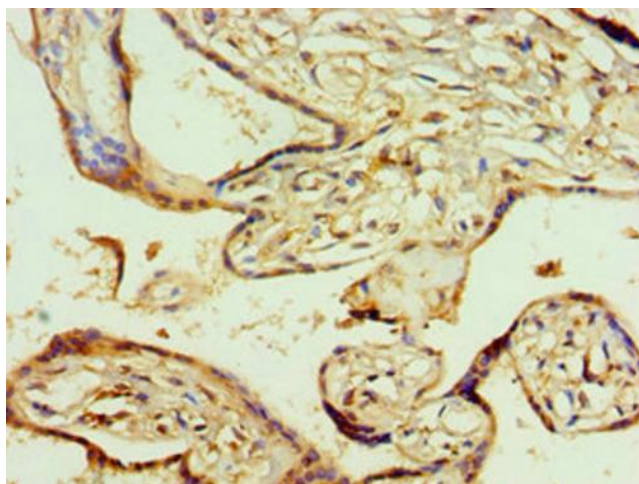


[View online »](#)

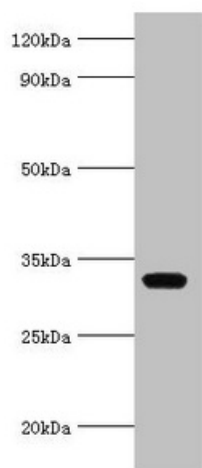
Product images:



Immunohistochemistry of paraffin-embedded human kidney tissue using [TA388591] at dilution of 1:100



Immunohistochemistry of paraffin-embedded human placenta tissue using [TA388591] at dilution of 1:100



Western blot

All lanes: AGPAT1 antibody at 6µg/ml + K562 whole cell lysate

Secondary

Goat polyclonal to rabbit IgG at 1/10000 dilution

Predicted band size: 32 kDa

Observed band size: 32 kDa