

Product datasheet for **TA388590M**

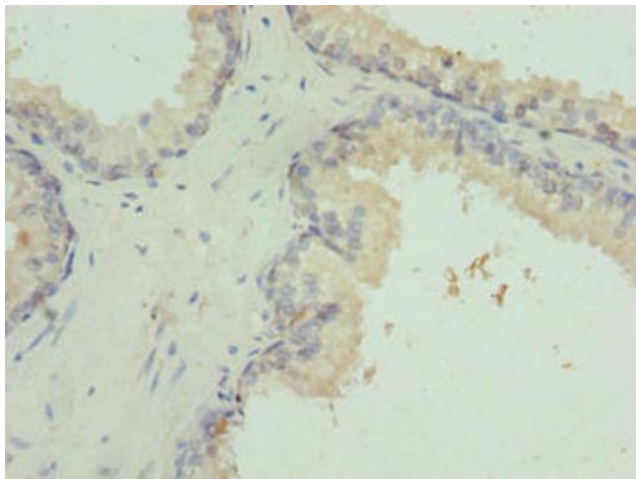
INTS14 Rabbit Polyclonal Antibody

Product data:

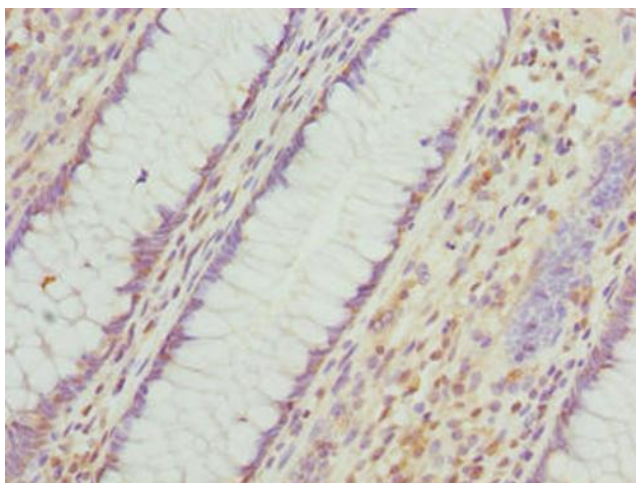
Product Type:	Primary Antibodies
Applications:	IHC, WB
Recommended Dilution:	Recommended dilution: WB:1:1000-1:5000, IHC:1:20-1:200
Reactivity:	Mouse, Human
Host:	Rabbit
Isotype:	IgG
Clonality:	Polyclonal
Immunogen:	Recombinant Human Integrator complex subunit 14 protein (231-518AA)
Formulation:	Preservative: 0.03% Proclin 300 Constituents: 50% Glycerol, 0.01M PBS, PH 7.4
Concentration:	lot specific
Purification:	>95%, Protein G purified
Conjugation:	Unconjugated
Storage:	Upon receipt, store at -20°C or -80°C. Avoid repeated freeze.
Stability:	1 year from dispatch.
Database Link:	Q96SY0



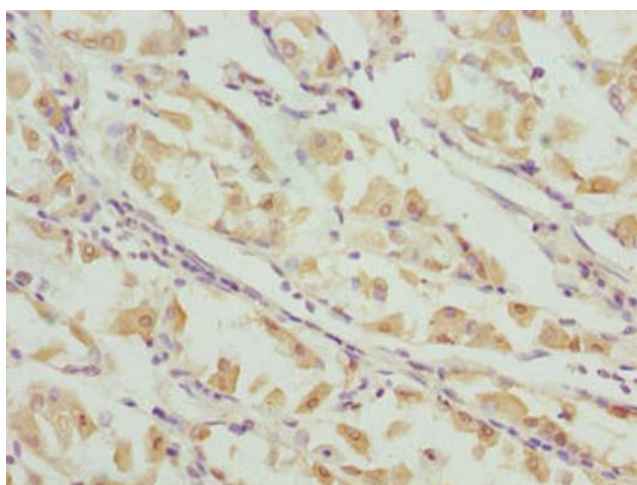
[View online »](#)

Product images:

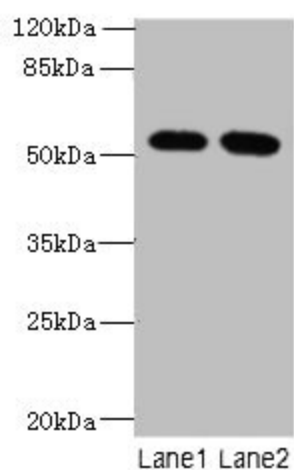
Immunohistochemistry of paraffin-embedded human prostate cancer using [TA388590] at dilution of 1:100



Immunohistochemistry of paraffin-embedded human colon cancer using [TA388590] at dilution of 1:100



Immunohistochemistry of paraffin-embedded human gastric cancer using [TA388590] at dilution of 1:100



Western blot
All lanes: INTS14 antibody at 4 μ g/ml
Lane 1: Hela whole cell lysate
Lane 2: NIH/3T3 whole cell lysate
Secondary
Goat polyclonal to rabbit IgG at 1/10000 dilution
Predicted band size: 58, 10, 49, 51 kDa
Observed band size: 58 kDa