

## Product datasheet for **TA388585**

### FRMD6 Rabbit Polyclonal Antibody

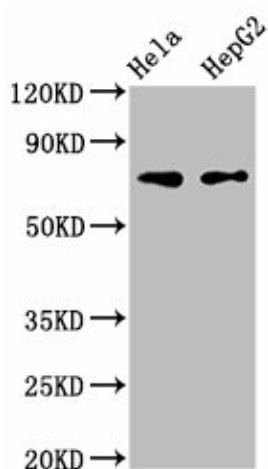
#### Product data:

Product Type:	Primary Antibodies
Applications:	IHC, WB
Recommended Dilution:	Recommended dilution: WB:1:500-1:5000, IHC:1:20-1:500
Reactivity:	Human
Host:	Rabbit
Isotype:	IgG
Clonality:	Polyclonal
Immunogen:	Recombinant Human FERM domain-containing protein 6 protein (413-622AA)
Formulation:	PBS with 0.02% sodium azide, 50% glycerol, pH7.3.
Concentration:	lot specific
Purification:	Antigen Affinity Purified
Conjugation:	Unconjugated
Storage:	Upon receipt, store at -20°C or -80°C. Avoid repeated freeze.
Stability:	1 year from dispatch.
Database Link:	<a href="#">Q96NE9</a>



[View online »](#)

## Product images:



## Western Blot

Positive WB detected in: HeLa whole cell lysate,  
HepG2 whole cell lysate

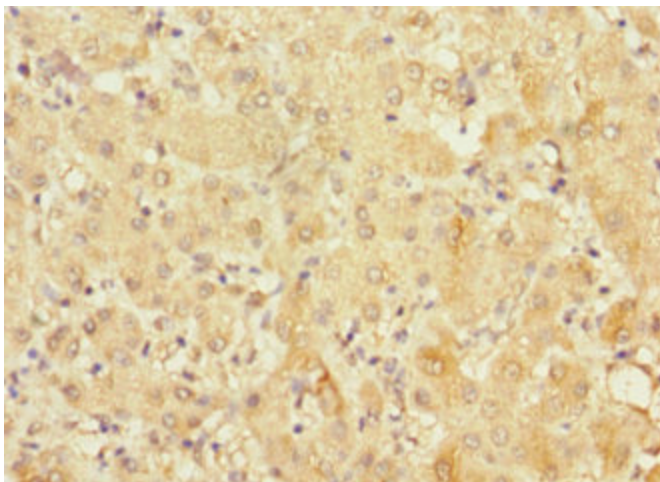
All lanes: FRMD6 antibody at 3 $\mu$ g/ml

Secondary

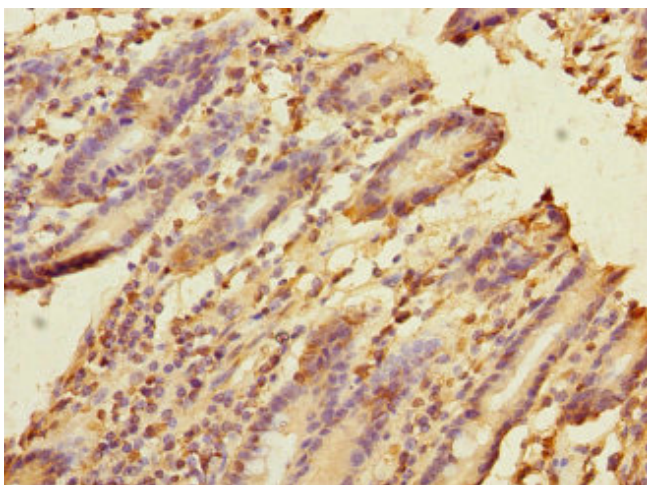
Goat polyclonal to rabbit IgG at 1/50000 dilution

Predicted band size: 73, 71, 30 kDa

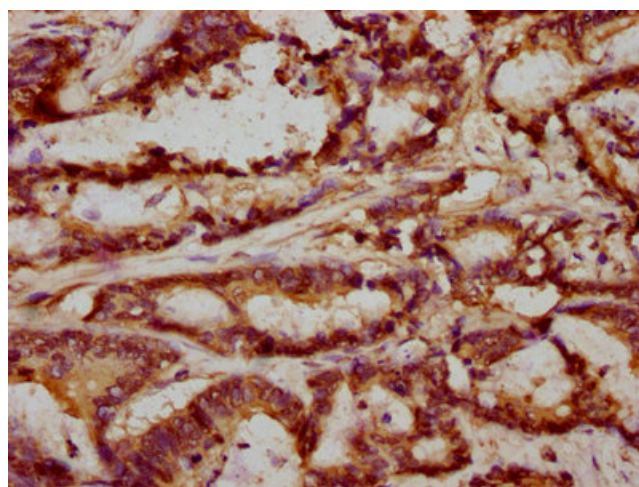
Observed band size: 73 kDa



Immunohistochemistry of paraffin-embedded  
human liver cancer using TA388585 at dilution of  
1:100



Immunohistochemistry of paraffin-embedded human duodenal tissue using TA388585 at dilution of 1:100



IHC image of TA388585 diluted at 1:293 and staining in paraffin-embedded human colon cancer performed on a Leica Bond™ system. After dewaxing and hydration, antigen retrieval was mediated by high pressure in a citrate buffer (pH 6.0). Section was blocked with 10% normal goat serum 30min at RT. Then primary antibody (1% BSA) was incubated at 4°C overnight. The primary is detected by a biotinylated secondary antibody and visualized using an HRP conjugated SP system.