

Product datasheet for **TA388583M**

TMEM68 Rabbit Polyclonal Antibody

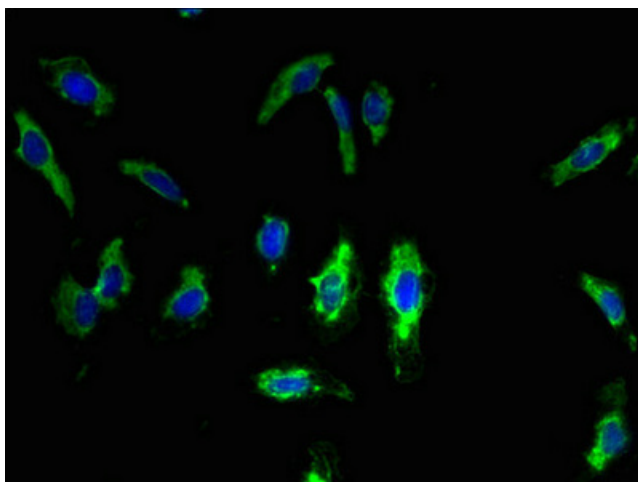
Product data:

Product Type:	Primary Antibodies
Applications:	IF, WB
Recommended Dilution:	Recommended dilution: WB:1:1000-1:5000, IF:1:50-1:200
Reactivity:	Mouse, Human
Host:	Rabbit
Isotype:	IgG
Clonality:	Polyclonal
Immunogen:	Recombinant Human Transmembrane protein 68 protein (74-114AA)
Formulation:	Preservative: 0.03% Proclin 300 Constituents: 50% Glycerol, 0.01M PBS, PH 7.4
Concentration:	lot specific
Purification:	>95%, Protein G purified
Conjugation:	Unconjugated
Storage:	Upon receipt, store at -20°C or -80°C. Avoid repeated freeze.
Stability:	1 year from dispatch.
Database Link:	Q96MH6

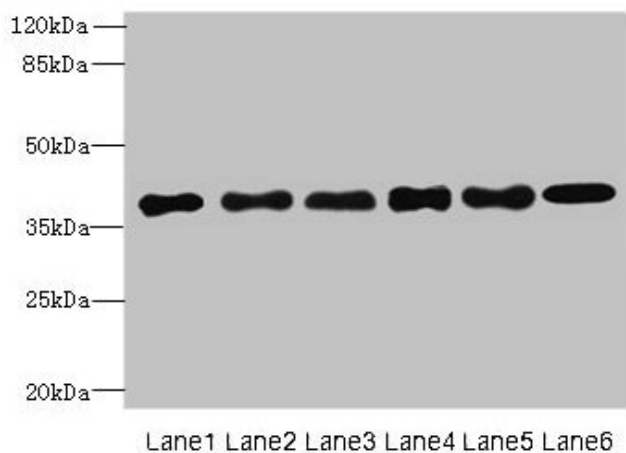


[View online »](#)

Product images:



Immunofluorescent analysis of HeLa cells using [TA388583] at dilution of 1:100 and Alexa Fluor 488-conjugated AffiniPure Goat Anti-Rabbit IgG(H+L)



Western blot
 All lanes: TMEM68 antibody at 4 μ g/ml
 Lane 1: Mouse thymus tissue
 Lane 2: K562 whole cell lysate
 Lane 3: U251 whole cell lysate
 Lane 4: HepG2 whole cell lysate
 Lane 5: MCF-7 whole cell lysate
 Lane 6: Jurkat whole cell lysate
 Secondary
 Goat polyclonal to rabbit IgG at 1/10000 dilution
 Predicted band size: 38, 30, 16 kDa
 Observed band size: 38 kDa