

Product datasheet for **TA388581**

METTL2A Rabbit Polyclonal Antibody

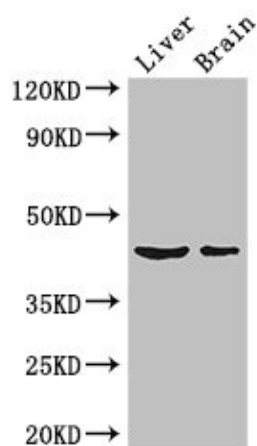
Product data:

Product Type:	Primary Antibodies
Applications:	WB
Recommended Dilution:	Recommended dilution: WB:1:2000-1:5000
Reactivity:	Mouse, Human
Host:	Rabbit
Isotype:	IgG
Clonality:	Polyclonal
Immunogen:	Recombinant Human Methyltransferase-like protein 2A protein (1-242AA)
Formulation:	Preservative: 0.03% Proclin 300 Constituents: 50% Glycerol, 0.01M PBS, PH 7.4
Concentration:	lot specific
Purification:	>95%, Protein G purified
Conjugation:	Unconjugated
Storage:	Upon receipt, store at -20°C or -80°C. Avoid repeated freeze.
Stability:	1 year from dispatch.
Database Link:	Q96IZ6
Background:	Probable S-adenosyl-L-methionine-dependent methyltransferase that mediates 3-methylcytidine modification of some tRNAs.



[View online »](#)

Product images:



Western Blot
Positive WB detected in: Mouse liver tissue,
Mouse brain tissue
All lanes: METTL2A antibody at 3 μ g/ml
Secondary
Goat polyclonal to rabbit IgG at 1/50000 dilution
Predicted band size: 44, 28 kDa
Observed band size: 44 kDa