

## Product datasheet for **TA388580**

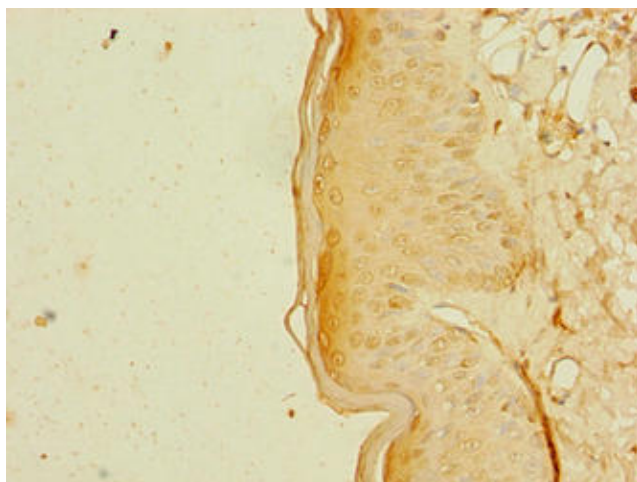
### **RBM41 Rabbit Polyclonal Antibody**

#### **Product data:**

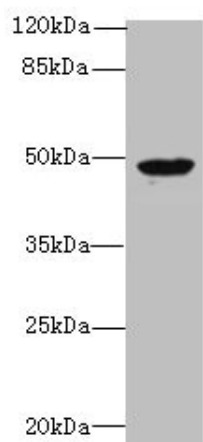
Product Type:	Primary Antibodies
Applications:	IHC, WB
Recommended Dilution:	Recommended dilution: WB:1:500-1:2000, IHC:1:20-1:200
Reactivity:	Human
Host:	Rabbit
Isotype:	IgG
Clonality:	Polyclonal
Immunogen:	Recombinant Human RNA-binding protein 41 protein (1-413AA)
Formulation:	Preservative: 0.03% Proclin 300 Constituents: 50% Glycerol, 0.01M PBS, PH 7.4
Concentration:	lot specific
Purification:	>95%, Protein G purified
Conjugation:	Unconjugated
Storage:	Upon receipt, store at -20°C or -80°C. Avoid repeated freeze.
Stability:	1 year from dispatch.
Database Link:	<a href="#">Q96IZ5</a>
Background:	May bind RNA.



[View online »](#)

**Product images:**

Immunohistochemistry of paraffin-embedded human skin tissue using TA388580 at dilution of 1:100



Western blot  
All lanes: RBM41 antibody at 1.5 $\mu$ g/ml + HeLa whole cell lysate  
Secondary  
Goat polyclonal to rabbit IgG at 1/10000 dilution  
Predicted band size: 48, 47, 36 kDa  
Observed band size: 48 kDa