

## Product datasheet for **TA388578**

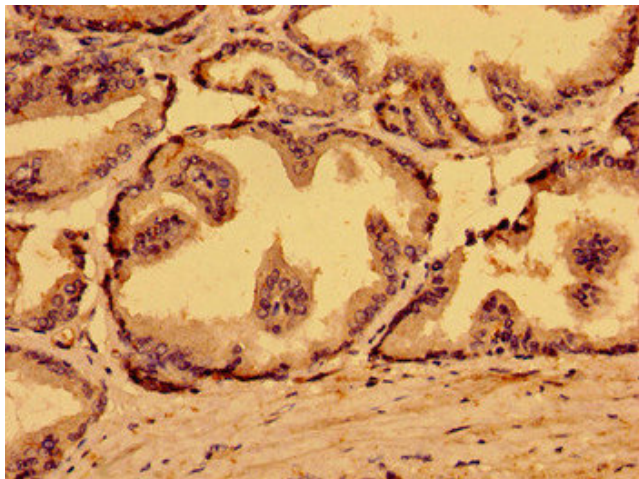
### MARS2 Rabbit Polyclonal Antibody

#### Product data:

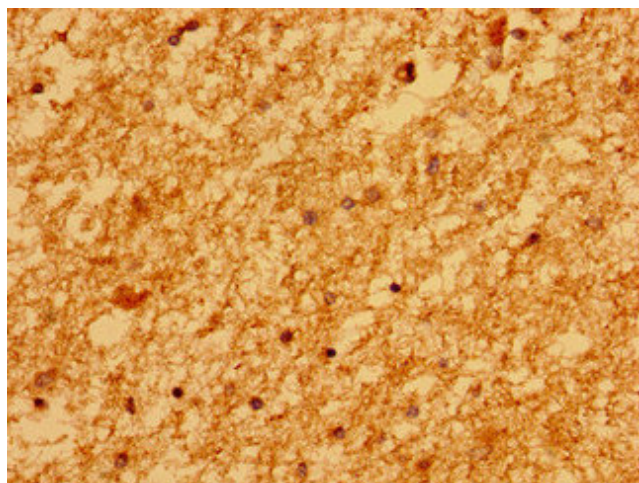
Product Type:	Primary Antibodies
Applications:	IHC, WB
Recommended Dilution:	Recommended dilution: WB:1:500-1:5000, IHC:1:20-1:200
Reactivity:	Human
Host:	Rabbit
Isotype:	IgG
Clonality:	Polyclonal
Immunogen:	Recombinant Human Methionine--tRNA ligase, mitochondrial protein (225-460AA)
Formulation:	Preservative: 0.03% Proclin 300 Constituents: 50% Glycerol, 0.01M PBS, pH 7.4
Concentration:	lot specific
Purification:	>95%, Protein G purified
Conjugation:	Unconjugated
Storage:	Upon receipt, store at -20°C or -80°C. Avoid repeated freeze.
Stability:	1 year from dispatch.
Database Link:	<a href="#">Q96GW9</a>
Background:	ATP + L-methionine + tRNA(Met) = AMP + diphosphate + L-methionyl-tRNA(Met).



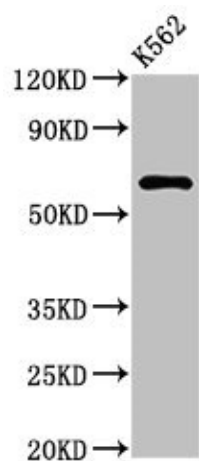
[View online »](#)

**Product images:**

Immunohistochemistry of paraffin-embedded human prostate tissue using TA388578 at dilution of 1:100



Immunohistochemistry of paraffin-embedded human brain tissue using TA388578 at dilution of 1:100



Western Blot

Positive WB detected in: K562 whole cell lysate

All lanes: MARS2 antibody at 3 $\mu$ g/ml

Secondary

Goat polyclonal to rabbit IgG at 1/50000 dilution

Predicted band size: 67 kDa

Observed band size: 67 kDa