

## Product datasheet for **TA388572M**

### RCN3 Rabbit Polyclonal Antibody

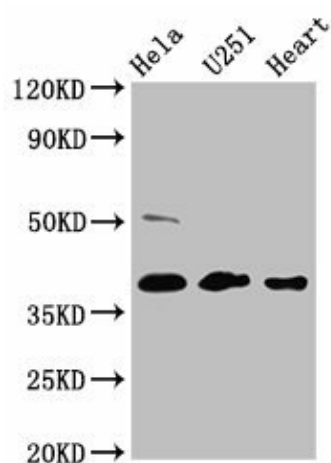
#### Product data:

|                       |  |
|-----------------------|--|
| Product Type:         | Primary Antibodies   |
| Applications:         | IHC, WB  |
| Recommended Dilution: | Recommended dilution: WB:1:500-1:5000, IHC:1:200-1:500                           |
| Reactivity:           | Mouse, Human   |
| Host:                 | Rabbit   |
| Isotype:              | IgG  |
| Clonality:            | Polyclonal   |
| Immunogen:            | Recombinant Human Reticulocalbin-3 protein (71-161AA)                            |
| Formulation:          | Preservative: 0.03% Proclin 300<br>Constituents: 50% Glycerol, 0.01M PBS, pH 7.4 |
| Concentration:        | lot specific   |
| Purification:         | >95%, Protein G purified   |
| Conjugation:          | Unconjugated   |
| Storage:              | Upon receipt, store at -20°C or -80°C. Avoid repeated freeze.                    |
| Stability:            | 1 year from dispatch.  |
| Database Link:        | <a href="#">Q96D15</a>   |



[View online »](#)

## Product images:



## Western Blot

Positive WB detected in: HeLa whole cell lysate,  
U251 whole cell lysate, Mouse heart tissue

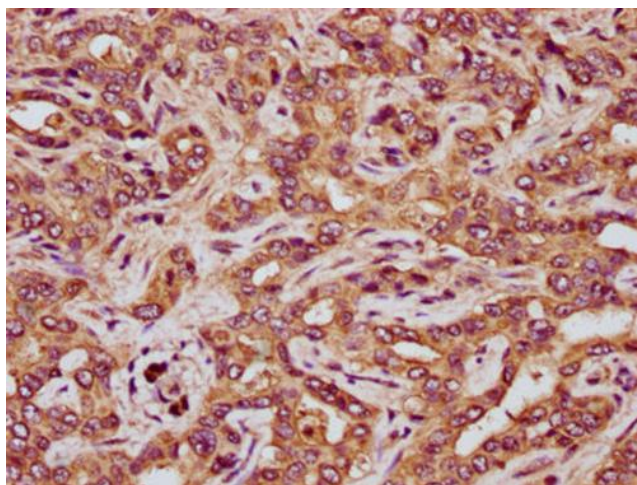
All lanes: RCN3 antibody at 4.6µg/ml

Secondary

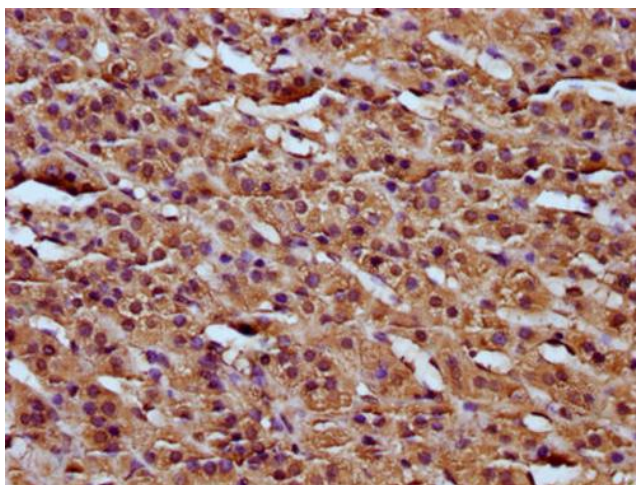
Goat polyclonal to rabbit IgG at 1/50000 dilution

Predicted band size: 38 kDa

Observed band size: 38 kDa



IHC image of [TA388572] diluted at 1:200 and staining in paraffin-embedded human liver tissue performed on a Leica Bond™ system. After dewaxing and hydration, antigen retrieval was mediated by high pressure in a citrate buffer (pH 6.0). Section was blocked with 10% normal goat serum 30min at RT. Then primary antibody (1% BSA) was incubated at 4°C overnight. The primary is detected by a biotinylated secondary antibody and visualized using an HRP conjugated SP system.



IHC image of [TA388572] diluted at 1:200 and staining in paraffin-embedded human adrenal gland tissue performed on a Leica Bond™ system. After dewaxing and hydration, antigen retrieval was mediated by high pressure in a citrate buffer (pH 6.0). Section was blocked with 10% normal goat serum 30min at RT. Then primary antibody (1% BSA) was incubated at 4°C overnight. The primary is detected by a biotinylated secondary antibody and visualized using an HRP conjugated SP system.