

## Product datasheet for **TA388571M**

### SLC25A36 Rabbit Polyclonal Antibody

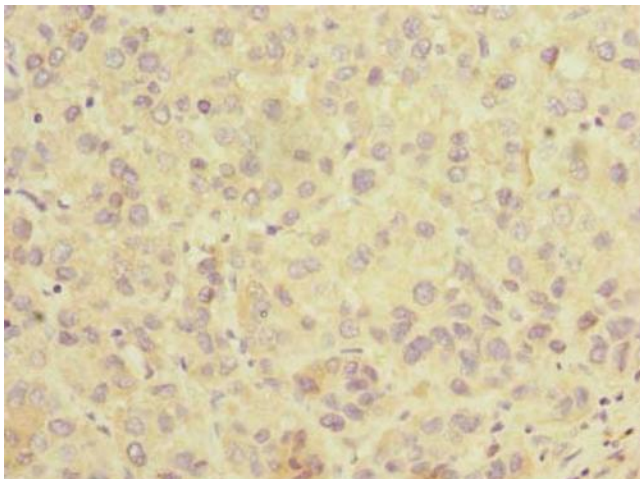
#### Product data:

Product Type:	Primary Antibodies
Applications:	IF, IHC, WB
Recommended Dilution:	Recommended dilution: WB:1:500-1:2000, IHC:1:20-1:200, IF:1:50-1:200
Reactivity:	Human
Host:	Rabbit
Isotype:	IgG
Clonality:	Polyclonal
Immunogen:	Recombinant Human Solute carrier family 25 member 36 protein (58-110AA)
Formulation:	Preservative: 0.03% Proclin 300 Constituents: 50% Glycerol, 0.01M PBS, PH 7.4
Concentration:	lot specific
Purification:	>95%, Protein G purified
Conjugation:	Unconjugated
Storage:	Upon receipt, store at -20°C or -80°C. Avoid repeated freeze.
Stability:	1 year from dispatch.
Database Link:	<a href="#">Q96CQ1</a>
Background:	Mitochondrial transporter that imports/exports pyrimidine nucleotides into and from mitochondria. Transports preferentially cytosine and uracil (deoxy)nucleoside mono-, di-, and triphosphates by uniport and antiport mechanism. Also transports guanine but not adenine (deoxy)nucleotides. Is inhibited strongly by pyridoxal 5'-phosphate, 4,7-diphenyl-1,10-phenanthroline, tannic acid, and mercurials (mercury dichloride, Mersalyl acid, p-hydroxymercuribenzoate). Participates in mitochondrial genome maintenance, regulation of mitochondrial membrane potential and mitochondrial respiration.

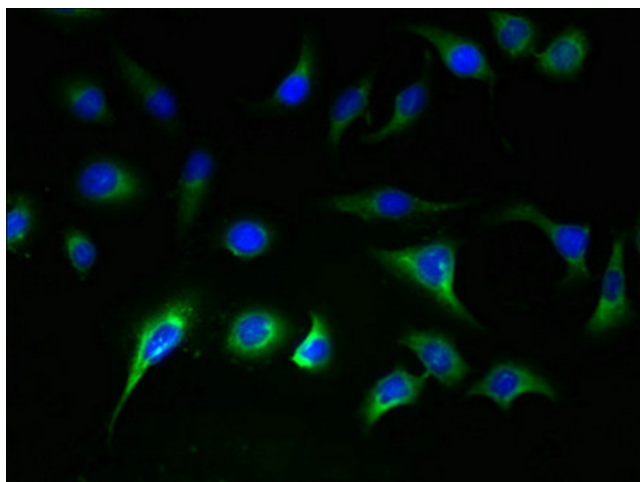


[View online »](#)

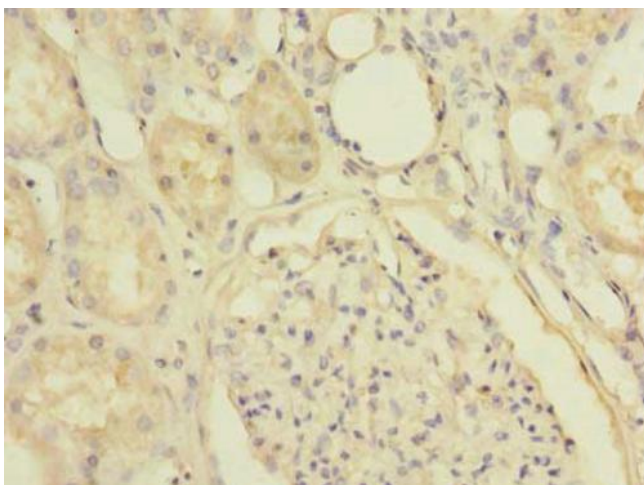
## Product images:



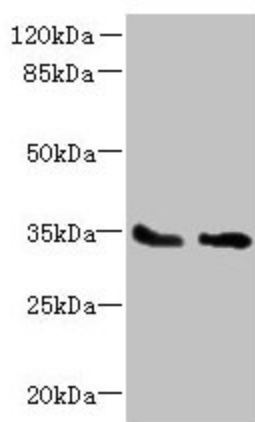
Immunohistochemistry of paraffin-embedded human liver cancer using [TA388571] at dilution of 1:100



Immunofluorescent analysis of A549 cells using [TA388571] at dilution of 1:100 and Alexa Fluor 488-conjugated AffiniPure Goat Anti-Rabbit IgG(H+L)



Immunohistochemistry of paraffin-embedded human kidney tissue using [TA388571] at dilution of 1:100



Western blot

All lanes: SLC25A36 antibody at 4µg/ml

Lane 1: A431 whole cell lysate

Lane 2: A549 whole cell lysate

Secondary

Goat polyclonal to rabbit IgG at 1/10000 dilution

Predicted band size: 35, 15, 18 kDa

Observed band size: 35 kDa