

Product datasheet for **TA388560M**

TSR2 Rabbit Polyclonal Antibody

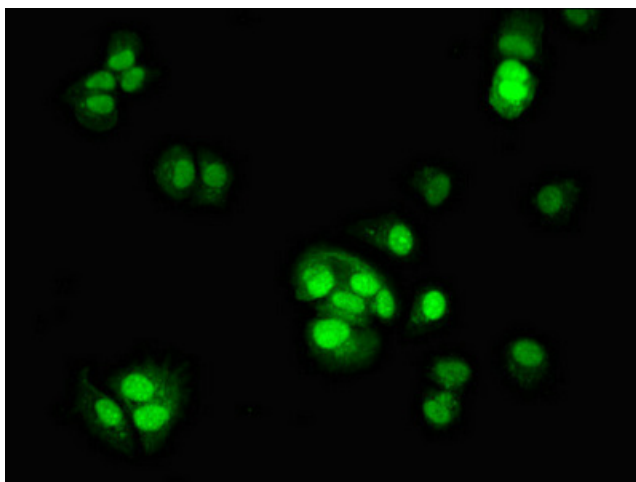
Product data:

Product Type:	Primary Antibodies
Applications:	IF, IHC, WB
Recommended Dilution:	Recommended dilution: WB:1:200-1:5000, IHC:1:20-1:200, IF:1:50-1:200
Reactivity:	Human
Host:	Rabbit
Isotype:	IgG
Clonality:	Polyclonal
Immunogen:	Recombinant Human Pre-rRNA-processing protein TSR2 homolog protein (1-191AA)
Formulation:	Preservative: 0.03% Proclin 300 Constituents: 50% Glycerol, 0.01M PBS, pH 7.4
Concentration:	lot specific
Purification:	>95%, Protein G purified
Conjugation:	Unconjugated
Storage:	Upon receipt, store at -20°C or -80°C. Avoid repeated freeze.
Stability:	1 year from dispatch.
Database Link:	Q969E8
Background:	May be involved in 20S pre-rRNA processing.



[View online »](#)

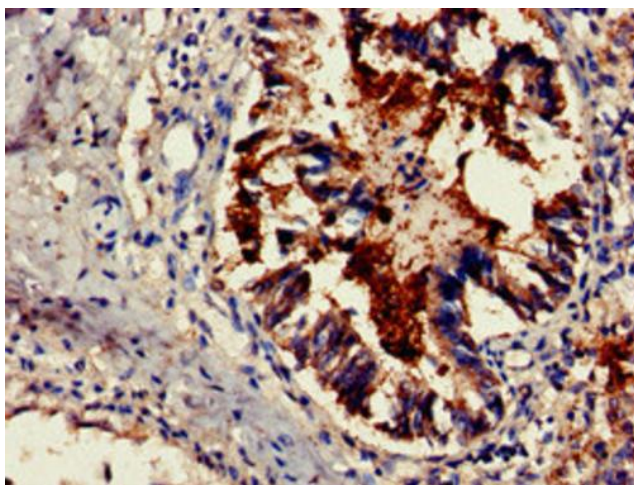
Product images:



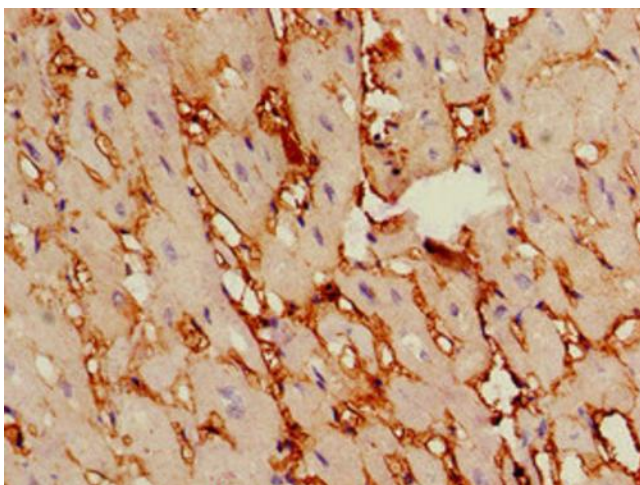
Immunofluorescent analysis of MCF-7 cells using [TA388560] at dilution of 1:100 and Alexa Fluor 488-conjugated AffiniPure Goat Anti-Rabbit IgG(H+L)



Western Blot
Positive WB detected in: HEK293 whole cell lysate
All lanes: TSR2 antibody at 2µg/ml
Secondary
Goat polyclonal to rabbit IgG at 1/50000 dilution
Predicted band size: 21 kDa
Observed band size: 21 kDa



Immunohistochemistry of paraffin-embedded human lung tissue using [TA388560] at dilution of 1:100



Immunohistochemistry of paraffin-embedded human heart tissue using [TA388560] at dilution of 1:100