

Product datasheet for **TA388558M**

PMM1 Rabbit Polyclonal Antibody

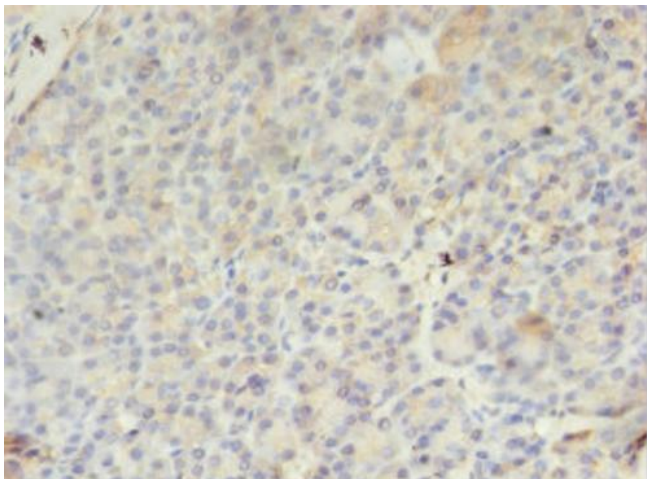
Product data:

Product Type:	Primary Antibodies
Applications:	IHC, WB
Recommended Dilution:	Recommended dilution: WB:1:500-1:5000, IHC:1:20-1:200
Reactivity:	Mouse, Human
Host:	Rabbit
Isotype:	IgG
Clonality:	Polyclonal
Immunogen:	Recombinant Human Phosphomannomutase 1 protein (2-262AA)
Formulation:	Preservative: 0.03% Proclin 300 Constituents: 50% Glycerol, 0.01M PBS, PH 7.4
Concentration:	lot specific
Purification:	>95%, Protein G purified
Conjugation:	Unconjugated
Storage:	Upon receipt, store at -20°C or -80°C. Avoid repeated freeze.
Stability:	1 year from dispatch.
Database Link:	Q92871
Background:	Involved in the synthesis of the GDP-mannose and dolichol-phosphate-mannose required for a number of critical mannosyl transfer reactions. In addition, may be responsible for the degradation of glucose-1,6-bisphosphate in ischemic brain.

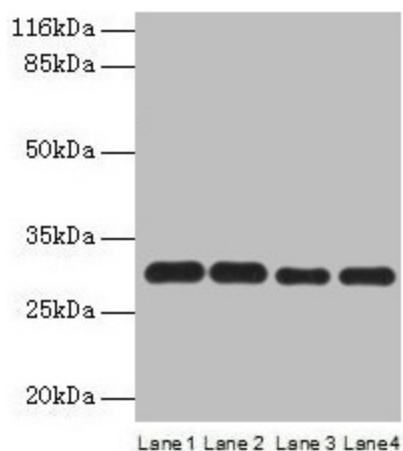


[View online »](#)

Product images:



Immunohistochemistry of paraffin-embedded human pancreatic tissue using [TA388558] at dilution of 1:100



Western blot
All lanes: PMM1 antibody at 2 μ g/ml
Lane 1: HepG2 whole cell lysate
Lane 2: NIH/3T3 whole cell lysate
Lane 3: 293T whole cell lysate
Lane 4: Mouse brain tissue
Secondary
Goat polyclonal to rabbit IgG at 1/10000 dilution
Predicted band size: 30 kDa
Observed band size: 30 kDa