

## Product datasheet for **TA388558**

### **PMM1 Rabbit Polyclonal Antibody**

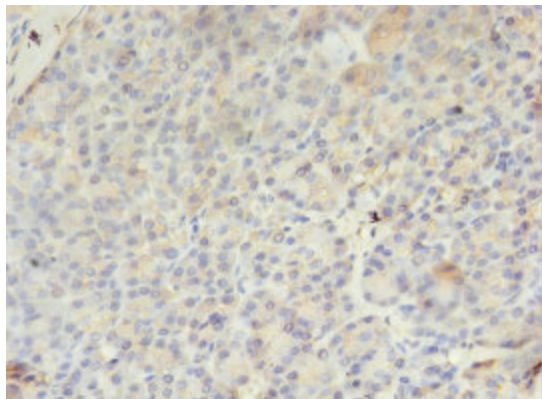
#### **Product data:**

<b>Product Type:</b>	Primary Antibodies
<b>Applications:</b>	IHC, WB
<b>Recommended Dilution:</b>	Recommended dilution: WB:1:500-1:5000, IHC:1:20-1:200
<b>Reactivity:</b>	Mouse, Human
<b>Host:</b>	Rabbit
<b>Isotype:</b>	IgG
<b>Clonality:</b>	Polyclonal
<b>Immunogen:</b>	Recombinant Human Phosphomannomutase 1 protein (2-262AA)
<b>Formulation:</b>	Preservative: 0.03% Proclin 300 Constituents: 50% Glycerol, 0.01M PBS, PH 7.4
<b>Concentration:</b>	lot specific
<b>Purification:</b>	>95%, Protein G purified
<b>Conjugation:</b>	Unconjugated
<b>Storage:</b>	Upon receipt, store at -20°C or -80°C. Avoid repeated freeze.
<b>Stability:</b>	1 year from dispatch.
<b>Database Link:</b>	<a href="#">Q92871</a>
<b>Background:</b>	Involved in the synthesis of the GDP-mannose and dolichol-phosphate-mannose required for a number of critical mannosyl transfer reactions. In addition, may be responsible for the degradation of glucose-1,6-bisphosphate in ischemic brain.

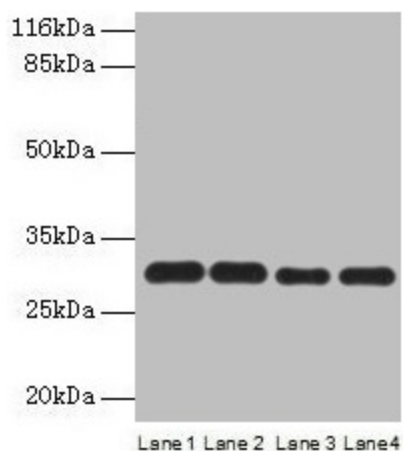


[View online »](#)

**Product images:**



Immunohistochemistry of paraffin-embedded human pancreatic tissue using TA388558 at dilution of 1:100



Western blot  
 All lanes: PMM1 antibody at 2 $\mu$ g/ml  
 Lane 1: HepG2 whole cell lysate  
 Lane 2: NIH/3T3 whole cell lysate  
 Lane 3: 293T whole cell lysate  
 Lane 4: Mouse brain tissue  
 Secondary  
 Goat polyclonal to rabbit IgG at 1/10000 dilution  
 Predicted band size: 30 kDa  
 Observed band size: 30 kDa