

## Product datasheet for **TA388557M**

### **NELL1 Rabbit Polyclonal Antibody**

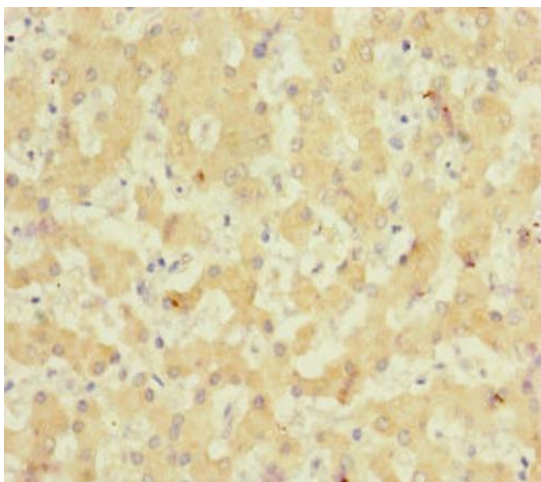
#### **Product data:**

Product Type:	Primary Antibodies
Applications:	IHC, WB
Recommended Dilution:	Recommended dilution: WB:1:1000-1:5000, IHC:1:20-1:200
Reactivity:	Human
Host:	Rabbit
Isotype:	IgG
Clonality:	Polyclonal
Immunogen:	Recombinant Human Protein kinase C-binding protein NELL1 protein (160-420AA)
Formulation:	PBS with 0.02% sodium azide, 50% glycerol, pH7.3.
Concentration:	lot specific
Purification:	Antigen Affinity Purified
Conjugation:	Unconjugated
Storage:	Upon receipt, store at -20°C or -80°C. Avoid repeated freeze.
Stability:	1 year from dispatch.
Database Link:	<a href="#">Q92832</a>
Background:	Plays a role in the control of cell growth and differentiation. Promotes osteoblast cell differentiation and terminal mineralization.

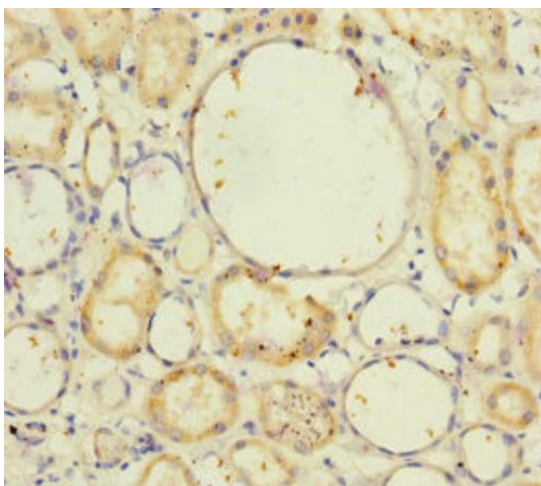


[View online »](#)

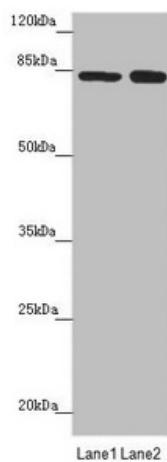
## Product images:



Immunohistochemistry of paraffin-embedded human liver tissue using [TA388557] at dilution of 1:100



Immunohistochemistry of paraffin-embedded human kidney tissue using [TA388557] at dilution of 1:100



## Western blot

All lanes: NELL1 antibody at 4.52µg/ml

Lane 1: Hela whole cell lysate

Lane 2: Jurkat whole cell lysate

Secondary

Goat polyclonal to rabbit IgG at 1/10000 dilution

Predicted band size: 90, 85 kDa

Observed band size: 85 kDa