

Product datasheet for **TA388556M**

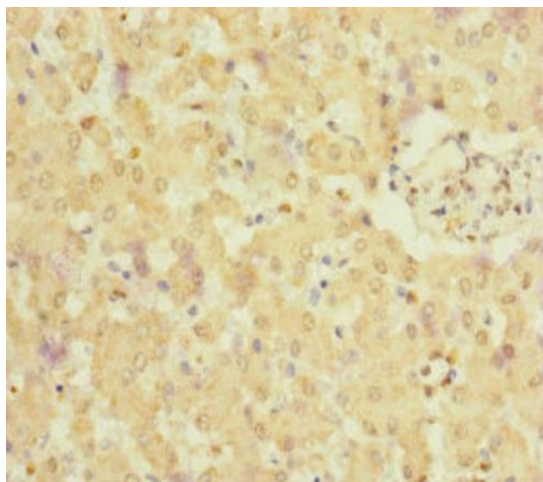
NELL1 Rabbit Polyclonal Antibody

Product data:

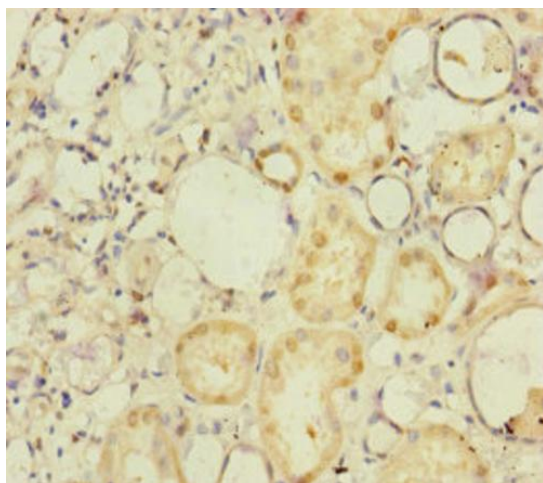
Product Type:	Primary Antibodies
Applications:	IHC, WB
Recommended Dilution:	Recommended dilution: WB:1:1000-1:5000, IHC:1:20-1:200
Reactivity:	Mouse, Human
Host:	Rabbit
Isotype:	IgG
Clonality:	Polyclonal
Immunogen:	Recombinant Human Protein kinase C-binding protein NELL1 protein (160-420AA)
Formulation:	PBS with 0.02% sodium azide, 50% glycerol, pH7.3.
Concentration:	lot specific
Purification:	Antigen Affinity Purified
Conjugation:	Unconjugated
Storage:	Upon receipt, store at -20°C or -80°C. Avoid repeated freeze.
Stability:	1 year from dispatch.
Database Link:	Q92832
Background:	Plays a role in the control of cell growth and differentiation. Promotes osteoblast cell differentiation and terminal mineralization.



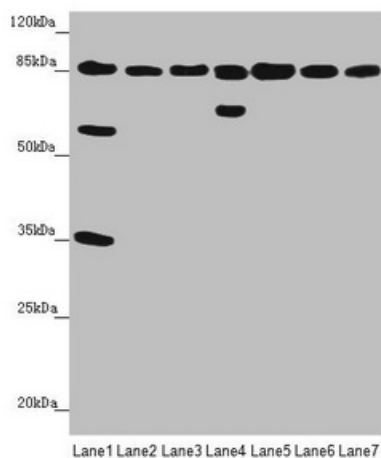
[View online »](#)

Product images:

Immunohistochemistry of paraffin-embedded human liver tissue using [TA388556] at dilution of 1:100



Immunohistochemistry of paraffin-embedded human kidney tissue using [TA388556] at dilution of 1:100



Western blot

All lanes: NELL1 antibody at 3.47 µg/ml

Lane 1: Mouse liver tissue

Lane 2: Mouse kidney tissue

Lane 3: Mouse spleen tissue

Lane 4: Human placenta tissue

Lane 5: Hela whole cell lysate

Lane 6: Jurkat whole cell lysate

Lane 7: MCF-7 whole cell lysate

Secondary

Goat polyclonal to rabbit IgG at 1/10000 dilution

Predicted band size: 90, 85 kDa

Observed band size: 90, 65, 58, 35 kDa