

## Product datasheet for **TA388552**

### **RUFY2 Rabbit Polyclonal Antibody**

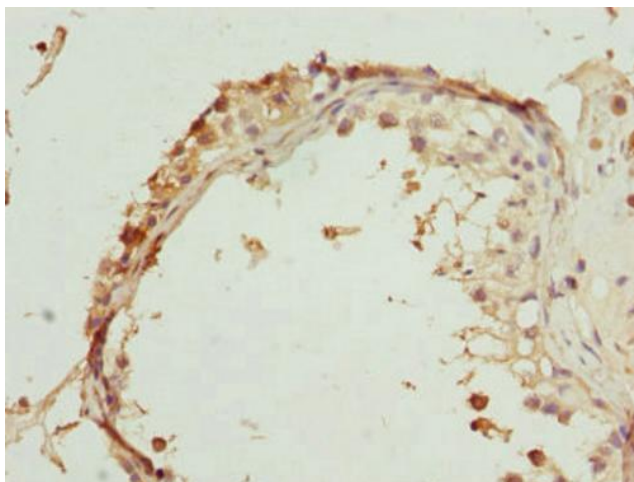
#### **Product data:**

Product Type:	Primary Antibodies
Applications:	IHC, WB
Recommended Dilution:	Recommended dilution: WB:1:1000-1:5000, IHC:1:20-1:200
Reactivity:	Mouse, Human
Host:	Rabbit
Isotype:	IgG
Clonality:	Polyclonal
Immunogen:	Recombinant Human RUN and FYVE domain-containing protein 2 protein (396-655AA)
Formulation:	PBS with 0.02% sodium azide, 50% glycerol, pH7.3.
Concentration:	lot specific
Purification:	Antigen Affinity Purified
Conjugation:	Unconjugated
Storage:	Upon receipt, store at -20°C or -80°C. Avoid repeated freeze.
Stability:	1 year from dispatch.
Database Link:	<a href="#"><u>Q8WXA3</u></a>

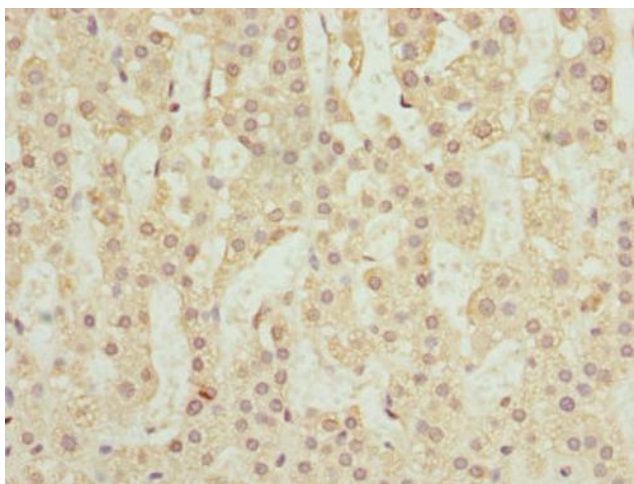


[View online »](#)

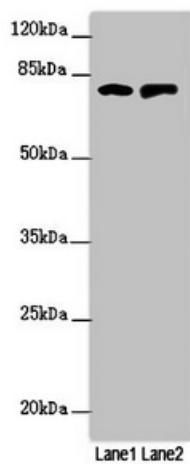
**Product images:**



Immunohistochemistry of paraffin-embedded human testis tissue using TA388552 at dilution of 1:100



Immunohistochemistry of paraffin-embedded human adrenal gland tissue using TA388552 at dilution of 1:100



Western blot

All lanes: RUFY2 antibody at 1.69µg/ml

Lane 1: PC-3 whole cell lysate

Lane 2: Mouse spleen tissue

Secondary

Goat polyclonal to rabbit IgG at 1/10000 dilution

Predicted band size: 76, 71, 75, 47, 44 kDa

Observed band size: 76 kDa