

## Product datasheet for **TA388550M**

### SLC35F5 Rabbit Polyclonal Antibody

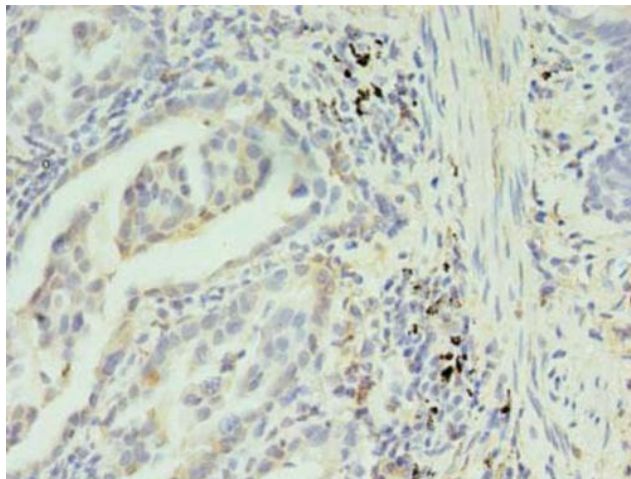
#### Product data:

Product Type:	Primary Antibodies
Applications:	IF, IHC, WB
Recommended Dilution:	Recommended dilution: WB:1:500-1:2000, IHC:1:20-1:200, IF:1:50-1:200
Reactivity:	Human
Host:	Rabbit
Isotype:	IgG
Clonality:	Polyclonal
Immunogen:	Recombinant Human Solute carrier family 35 member F5 protein (122-242AA)
Formulation:	Preservative: 0.03% Proclin 300 Constituents: 50% Glycerol, 0.01M PBS, PH 7.4
Concentration:	lot specific
Purification:	>95%, Protein G purified
Conjugation:	Unconjugated
Storage:	Upon receipt, store at -20°C or -80°C. Avoid repeated freeze.
Stability:	1 year from dispatch.
Database Link:	<a href="#">Q8WV83</a>
Background:	Putative solute transporter.

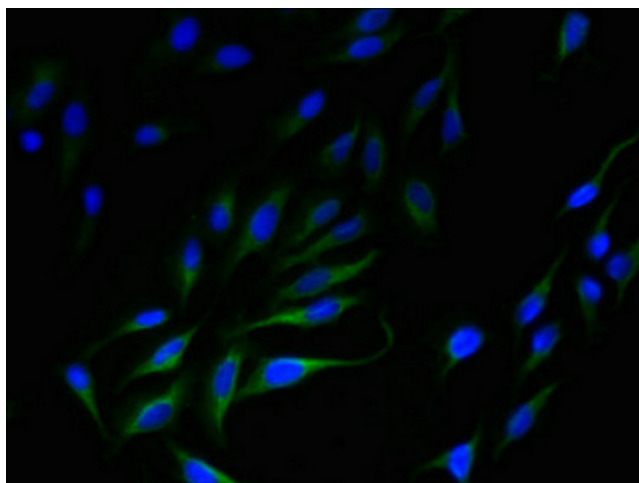


[View online »](#)

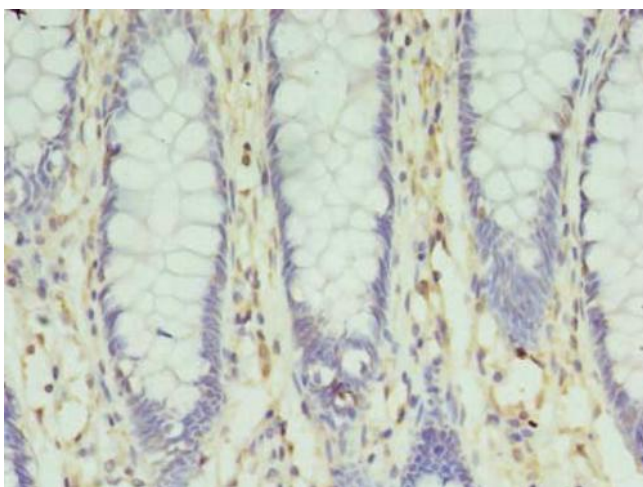
## Product images:



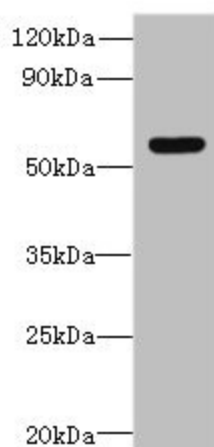
Immunohistochemistry of paraffin-embedded human lung cancer using [TA388550] at dilution of 1:100



Immunofluorescent analysis of Hela cells using [TA388550] at dilution of 1:100 and Alexa Fluor 488-conjugated AffiniPure Goat Anti-Rabbit IgG(H+L)



Immunohistochemistry of paraffin-embedded human colon cancer using [TA388550] at dilution of 1:100



Western blot  
All lanes: SLC35F5 antibody at 6µg/ml + HeLa whole cell lysate  
Secondary  
Goat polyclonal to rabbit IgG at 1/10000 dilution  
Predicted band size: 59, 28 kDa  
Observed band size: 59 kDa