

Product datasheet for **TA388548M**

FAM222B Rabbit Polyclonal Antibody

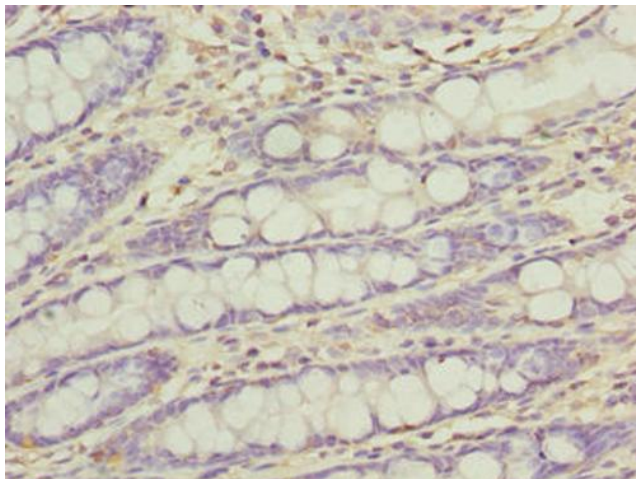
Product data:

Product Type:	Primary Antibodies
Applications:	IHC, WB
Recommended Dilution:	Recommended dilution: WB:1:1000-1:5000, IHC:1:20-1:200
Reactivity:	Mouse, Human
Host:	Rabbit
Isotype:	IgG
Clonality:	Polyclonal
Immunogen:	Recombinant Human Protein FAM222B protein (351-562AA)
Formulation:	Preservative: 0.03% Proclin 300 Constituents: 50% Glycerol, 0.01M PBS, PH 7.4
Concentration:	lot specific
Purification:	>95%, Protein G purified
Conjugation:	Unconjugated
Storage:	Upon receipt, store at -20°C or -80°C. Avoid repeated freeze.
Stability:	1 year from dispatch.
Database Link:	Q8WU58
Background:	nucleoplasm

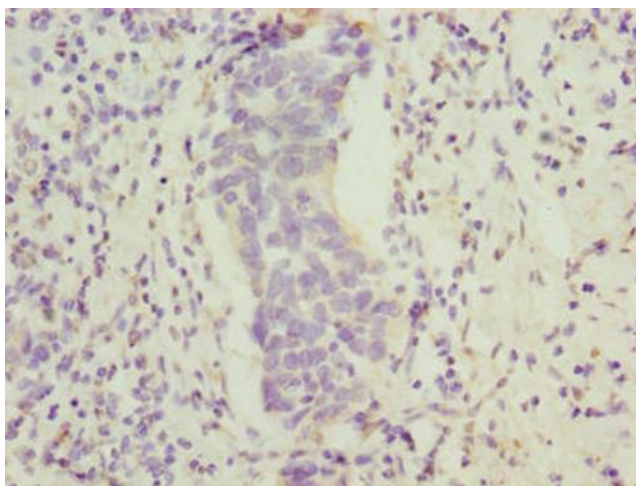


[View online »](#)

Product images:



Immunohistochemistry of paraffin-embedded human colon tissue using [TA388548] at dilution of 1:100



Immunohistochemistry of paraffin-embedded human bladder cancer using [TA388548] at dilution of 1:100



Western blot

All lanes: FAM222B antibody at 2 μ g/ml + Mouse liver tissue

Secondary

Goat polyclonal to rabbit IgG at 1/10000 dilution

Predicted band size: 60 kDa

Observed band size: 60 kDa