

## Product datasheet for **TA388541M**

### OR1K1 Rabbit Polyclonal Antibody

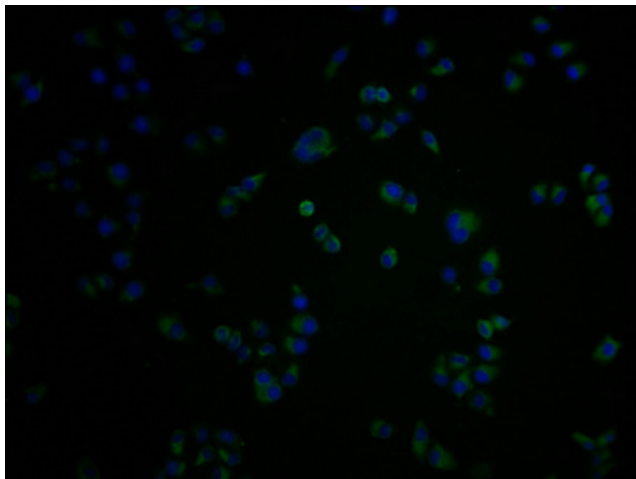
#### Product data:

Product Type:	Primary Antibodies
Applications:	IF, WB
Recommended Dilution:	Recommended dilution: WB:1:1000-1:5000, IF:1:100-1:500
Reactivity:	Human
Host:	Rabbit
Isotype:	IgG
Clonality:	Polyclonal
Immunogen:	Peptide sequence from Human Olfactory receptor 1K1 protein (261-273AA)
Formulation:	Preservative: 0.03% Proclin 300 Constituents: 50% Glycerol, 0.01M PBS, PH 7.4
Concentration:	lot specific
Purification:	>95%, Protein G purified
Conjugation:	Unconjugated
Storage:	Upon receipt, store at -20°C or -80°C. Avoid repeated freeze.
Stability:	1 year from dispatch.
Database Link:	<a href="#">Q8NGR3</a>
Background:	Odorant receptor.

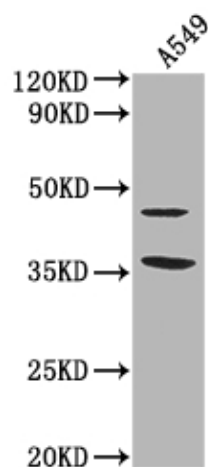


[View online »](#)

## Product images:



Immunofluorescence staining of HeLa cells with [TA388541] at 1:100, counter-stained with DAPI. The cells were fixed in 4% formaldehyde and blocked in 10% normal Goat Serum. The cells were then incubated with the antibody overnight at 4°C. The secondary antibody was Alexa Fluor 488-conjugated AffiniPure Goat Anti-Rabbit IgG(H+L).



Western Blot  
Positive WB detected in: A549 whole cell lysate  
All lanes: OR1K1 antibody at 1:2000  
Secondary  
Goat polyclonal to rabbit IgG at 1/50000 dilution  
Predicted band size: 35 kDa  
Observed band size: 35 kDa