

## Product datasheet for **TA388538M**

### **SUPT20H Rabbit Polyclonal Antibody**

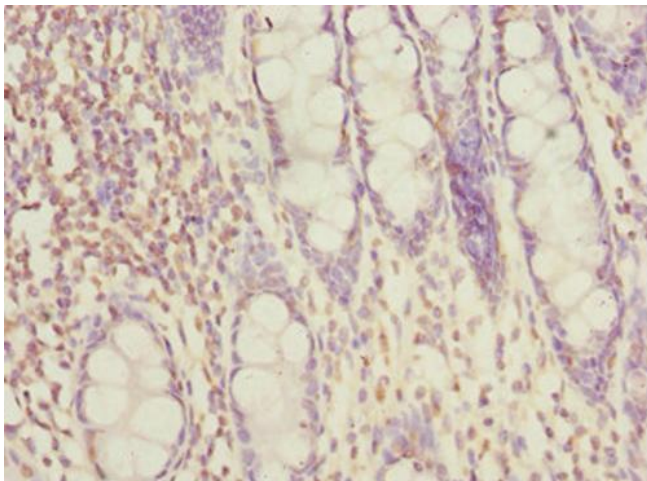
#### **Product data:**

|                       |  |
|-----------------------|--|
| Product Type:         | Primary Antibodies   |
| Applications:         | IHC, WB  |
| Recommended Dilution: | Recommended dilution: WB:1:1000-1:5000, IHC:1:20-1:200   |
| Reactivity:           | Mouse, Human   |
| Host:                 | Rabbit   |
| Isotype:              | IgG  |
| Clonality:            | Polyclonal   |
| Immunogen:            | Recombinant Human Transcription factor SPT20 homolog protein (580-779AA)   |
| Formulation:          | PBS with 0.02% sodium azide, 50% glycerol, pH7.3.  |
| Concentration:        | lot specific   |
| Purification:         | Antigen Affinity Purified  |
| Conjugation:          | Unconjugated   |
| Storage:              | Upon receipt, store at -20°C or -80°C. Avoid repeated freeze.  |
| Stability:            | 1 year from dispatch.  |
| Database Link:        | <u><a href="#">Q8NEM7</a></u>  |
| Background:           | Required for MAP kinase p38 (MAPK11, MAPK12, MAPK13 and/or MAPK14) activation during gastrulation. Required for down-regulation of E-cadherin during gastrulation by regulating E-cadherin protein level downstream from NCK-interacting kinase (NIK) and independently of the regulation of transcription by FGF signaling and Snail (By similarity). Required for starvation-induced ATG9A trafficking during autophagy. |

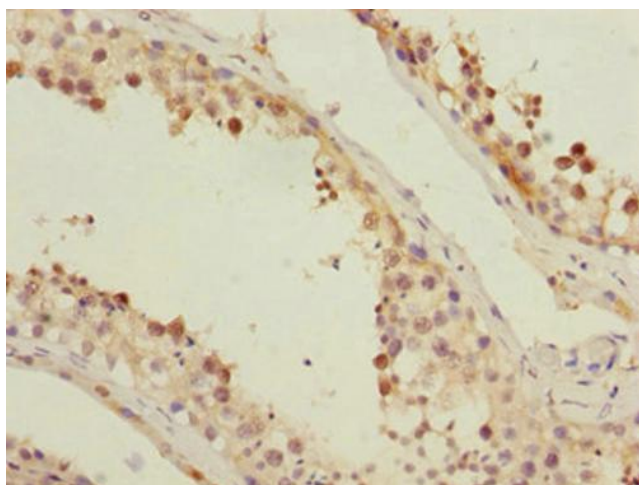


[View online »](#)

## Product images:



Immunohistochemistry of paraffin-embedded human colon tissue using [TA388538] at dilution of 1:100



Immunohistochemistry of paraffin-embedded human testis tissue using [TA388538] at dilution of 1:100



Western blot

All lanes: SUPT20H antibody at 2.07 $\mu$ g/ml +

Mouse kidney tissue

Secondary

Goat polyclonal to rabbit IgG at 1/10000 dilution

Predicted band size: 86, 81, 89 kDa

Observed band size: 86 kDa