

## Product datasheet for **TA388534**

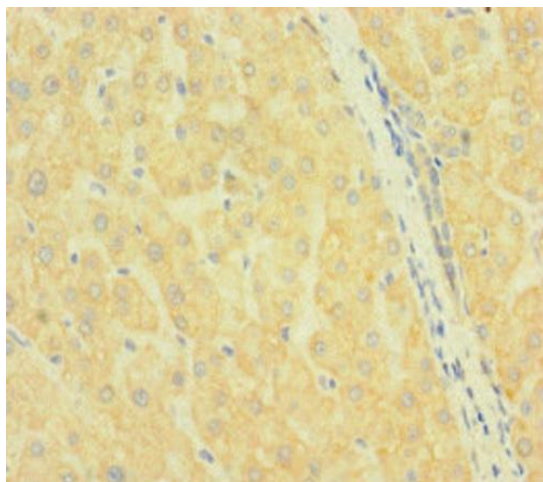
### SLC38A9 Rabbit Polyclonal Antibody

#### Product data:

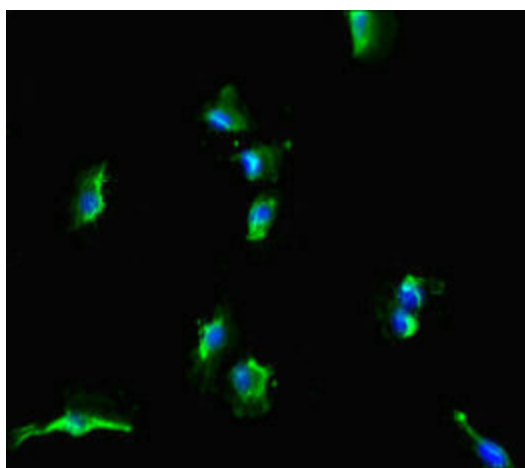
Product Type:	Primary Antibodies
Applications:	IF, IHC, WB
Recommended Dilution:	Recommended dilution: WB:1:500-1:5000, IHC:1:20-1:200, IF:1:50-1:200
Reactivity:	Human
Host:	Rabbit
Isotype:	IgG
Clonality:	Polyclonal
Immunogen:	Recombinant Human Sodium-coupled neutral amino acid transporter 9 protein (1-119AA)
Formulation:	Preservative: 0.03% Proclin 300 Constituents: 50% Glycerol, 0.01M PBS, PH 7.4
Concentration:	lot specific
Purification:	>95%, Protein G purified
Conjugation:	Unconjugated
Storage:	Upon receipt, store at -20°C or -80°C. Avoid repeated freeze.
Stability:	1 year from dispatch.
Database Link:	<a href="#">Q8NBW4</a>
Background:	Lysosomal amino acid transporter involved in the activation of mTORC1 in response to amino acids. Probably acts as an amino acid sensor of the Rag GTPases and Ragulator complexes, 2 complexes involved in amino acid sensing and activation of mTORC1, a signaling complex promoting cell growth in response to growth factors, energy levels, and amino acids (PubMed:25561175, PubMed:25567906). Following activation by amino acids, the Ragulator and Rag GTPases function as a scaffold recruiting mTORC1 to lysosomes where it is in turn activated. SLC38A9 mediates transport of amino acids with low capacity and specificity with a slight preference for polar amino acids, suggesting that it acts as an amino acid sensor instead (PubMed:25561175, PubMed:25567906). The high concentration of arginine in lysosomes suggests that it acts as an arginine sensor (PubMed:25567906).


[View online »](#)

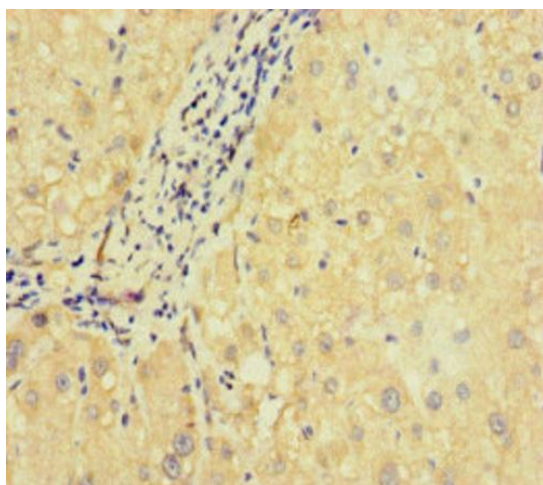
## Product images:



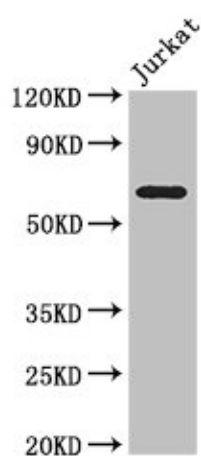
Immunohistochemistry of paraffin-embedded human liver tissue using TA388534 at dilution of 1:100



Immunofluorescent analysis of U251 cells using TA388534 at dilution of 1:100 and Alexa Fluor 488-conjugated AffiniPure Goat Anti-Rabbit IgG(H+L)



Immunohistochemistry of paraffin-embedded human liver cancer using TA388534 at dilution of 1:100



Western Blot  
Positive WB detected in: Jurkat whole cell lysate  
All lanes: SLC38A9 antibody at 3.5µg/ml  
Secondary  
Goat polyclonal to rabbit IgG at 1/50000 dilution  
Predicted band size: 64, 53, 57 kDa  
Observed band size: 64 kDa