

## Product datasheet for **TA388532**

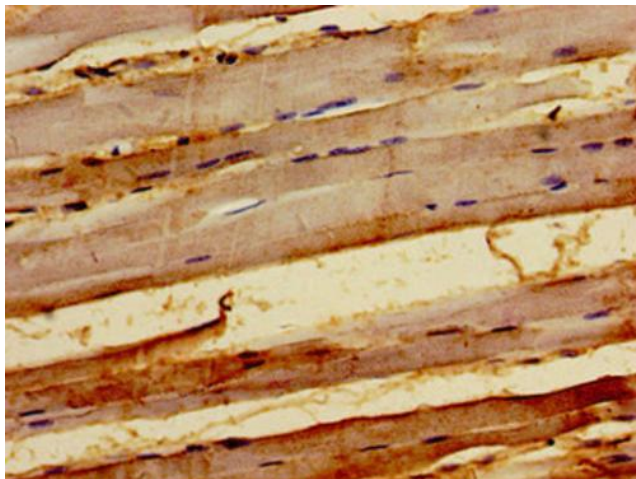
### KY Rabbit Polyclonal Antibody

#### Product data:

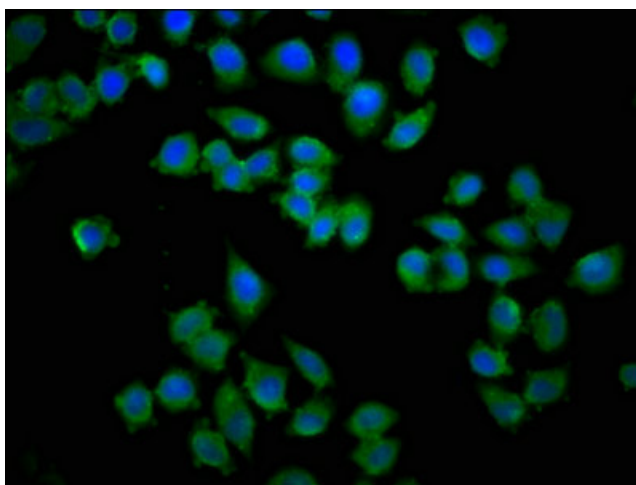
Product Type:	Primary Antibodies
Applications:	IF, IHC, WB
Recommended Dilution:	Recommended dilution: WB:1:500-1:5000, IHC:1:20-1:200, IF:1:50-1:200
Reactivity:	Human
Host:	Rabbit
Isotype:	IgG
Clonality:	Polyclonal
Immunogen:	Recombinant Human Kyphoscoliosis peptidase protein (23-170AA)
Formulation:	Preservative: 0.03% Proclin 300 Constituents: 50% Glycerol, 0.01M PBS, pH 7.4
Concentration:	lot specific
Purification:	>95%, Protein G purified
Conjugation:	Unconjugated
Storage:	Upon receipt, store at -20°C or -80°C. Avoid repeated freeze.
Stability:	1 year from dispatch.
Database Link:	<a href="#">Q8NBH2</a>
Background:	Probable cytoskeleton-associated protease required for normal muscle growth. Involved in function, maturation and stabilization of the neuromuscular junction. May act by cleaving muscle-specific proteins such as FLNC (By similarity).



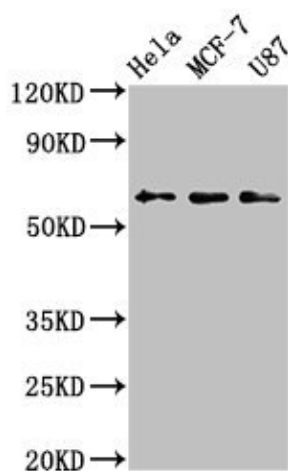
[View online »](#)

**Product images:**

Immunohistochemistry of paraffin-embedded human skeletal muscle tissue using TA388532 at dilution of 1:100



Immunofluorescence staining of HeLa cells with TA388532 at 1:133, counter-stained with DAPI. The cells were fixed in 4% formaldehyde, permeabilized using 0.2% Triton X-100 and blocked in 10% normal Goat Serum. The cells were then incubated with the antibody overnight at 4°C. The secondary antibody was Alexa Fluor 488-conjugated AffiniPure Goat Anti-Rabbit IgG(H+L).



Western Blot

Positive WB detected in: HeLa whole cell lysate, MCF-7 whole cell lysate, U87 whole cell lysate  
All lanes: KY antibody at 3.2µg/ml

Secondary

Goat polyclonal to rabbit IgG at 1/50000 dilution

Predicted band size: 64, 42, 73, 76 kDa

Observed band size: 64 kDa