

Product datasheet for **TA388530M**

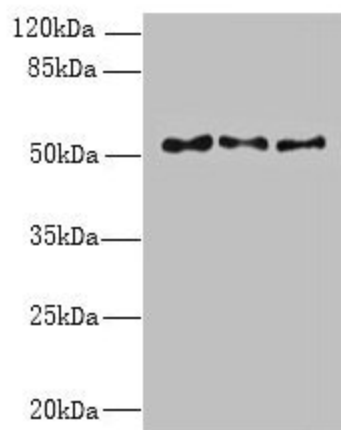
TRIML1 Rabbit Polyclonal Antibody

Product data:

Product Type:	Primary Antibodies
Applications:	WB
Recommended Dilution:	Recommended dilution: WB:1:500-1:2000
Reactivity:	Mouse, Human
Host:	Rabbit
Isotype:	IgG
Clonality:	Polyclonal
Immunogen:	Recombinant Human Probable E3 ubiquitin-protein ligase TRIML1 protein (277-468AA)
Formulation:	Preservative: 0.03% Proclin 300 Constituents: 50% Glycerol, 0.01M PBS, PH 7.4
Concentration:	lot specific
Purification:	>95%, Protein G purified
Conjugation:	Unconjugated
Storage:	Upon receipt, store at -20°C or -80°C. Avoid repeated freeze.
Stability:	1 year from dispatch.
Database Link:	Q8N9V2
Background:	Probable E3 ubiquitin-protein ligase which plays an important role in blastocyst development.



[View online »](#)

Product images:


Western blot

All lanes: TRIML1 antibody at 3 μ g/ml

Lane 1: Mouse kidney tissue

Lane 2: Human placenta tissue

Lane 3: A431 whole cell lysate

Secondary

Goat polyclonal to rabbit IgG at 1/10000 dilution

Predicted band size: 54 kDa

Observed band size: 54 kDa