

## Product datasheet for **TA388529**

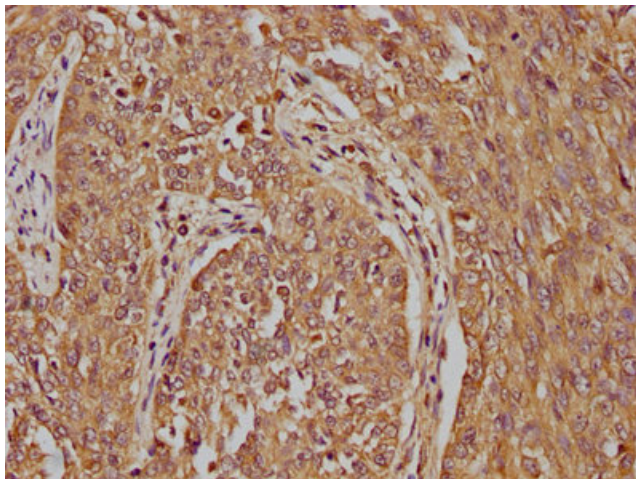
### LRTM2 Rabbit Polyclonal Antibody

#### Product data:

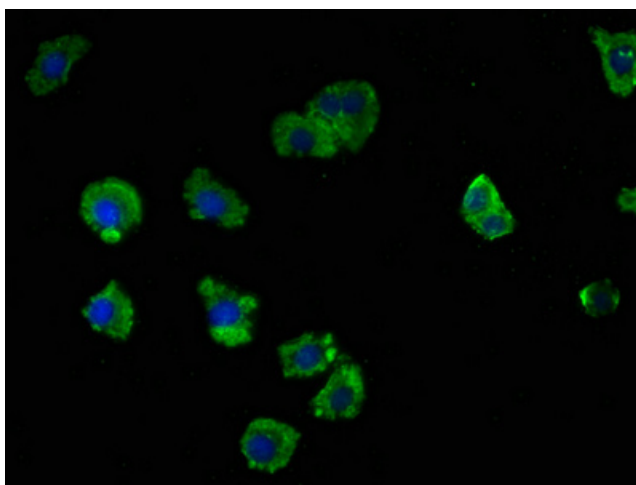
Product Type:	Primary Antibodies
Applications:	IF, IHC, WB
Recommended Dilution:	Recommended dilution: WB:1:1000-1:5000, IHC:1:20-1:200, IF:1:50-1:200
Reactivity:	Rat, Human
Host:	Rabbit
Isotype:	IgG
Clonality:	Polyclonal
Immunogen:	Recombinant Human Leucine-rich repeat and transmembrane domain-containing protein 2 protein (36-310AA)
Formulation:	Preservative: 0.03% Proclin 300 Constituents: 50% Glycerol, 0.01M PBS, pH 7.4
Concentration:	lot specific
Purification:	>95%, Protein G purified
Conjugation:	Unconjugated
Storage:	Upon receipt, store at -20°C or -80°C. Avoid repeated freeze.
Stability:	1 year from dispatch.
Database Link:	<a href="#">Q8N967</a>
Background:	cytoplasm, protein kinase inhibitor activity, cytokine-mediated signaling pathway, negative regulation of JAK-STAT cascade, negative regulation of protein kinase activity.



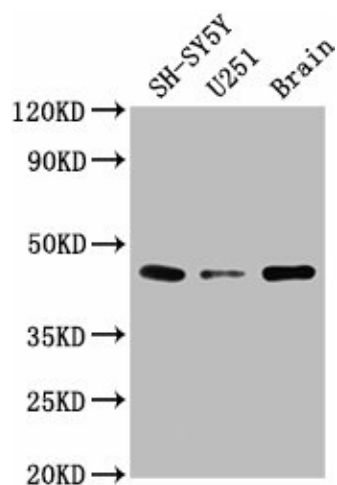
[View online »](#)

**Product images:**

IHC image of TA388529 diluted at 1:100 and staining in paraffin-embedded human cervical cancer performed on a Leica Bond<sup>TM</sup> system. After dewaxing and hydration, antigen retrieval was mediated by high pressure in a citrate buffer (pH 6.0). Section was blocked with 10% normal goat serum 30min at RT. Then primary antibody (1% BSA) was incubated at 4°C overnight. The primary is detected by a biotinylated secondary antibody and visualized using an HRP conjugated SP system.



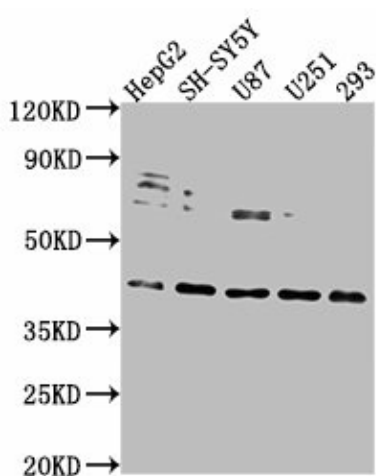
Immunofluorescence staining of HepG2 cells with TA388529 at 1:100, counter-stained with DAPI. The cells were fixed in 4% formaldehyde, permeabilized using 0.2% Triton X-100 and blocked in 10% normal Goat Serum. The cells were then incubated with the antibody overnight at 4°C. The secondary antibody was Alexa Fluor 488-conjugated AffiniPure Goat Anti-Rabbit IgG(H+L).


**Western Blot**

Positive WB detected in: SH-SY5Y whole cell lysate, U251 whole cell lysate, Rat brain tissue  
 All lanes: LRTM2 antibody at 1:2000

**Secondary**

Goat polyclonal to rabbit IgG at 1/50000 dilution  
 Predicted band size: 42 kDa  
 Observed band size: 42 kDa


**Western Blot**

Positive WB detected in: HepG2 whole cell lysate, SH-SY5Y whole cell lysate, U87 whole cell lysate, U251 whole cell lysate, 293 whole cell lysate  
 All lanes: LRTM2 antibody at 1:2000

**Secondary**

Goat polyclonal to rabbit IgG at 1/50000 dilution  
 Predicted band size: 42 kDa  
 Observed band size: 42 kDa