

## Product datasheet for **TA388528**

### **PNPLA1 Rabbit Polyclonal Antibody**

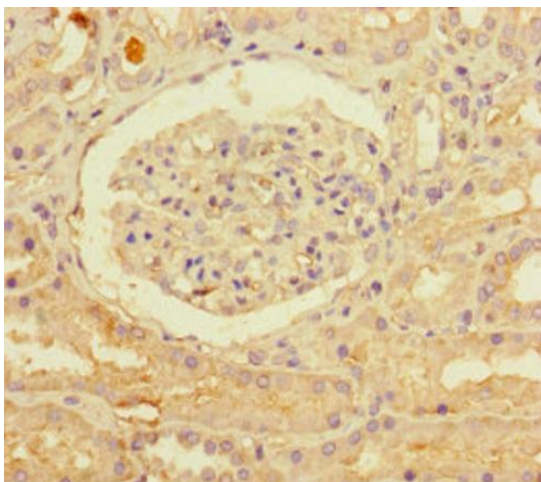
#### **Product data:**

Product Type:	Primary Antibodies
Applications:	IF, IHC, WB
Recommended Dilution:	Recommended dilution: WB:1:1000-1:5000, IHC:1:20-1:200, IF:1:50-1:200
Reactivity:	Mouse, Human
Host:	Rabbit
Isotype:	IgG
Clonality:	Polyclonal
Immunogen:	Recombinant Human Patatin-like phospholipase domain-containing protein 1 protein (101-300AA)
Formulation:	Preservative: 0.03% Proclin 300 Constituents: 50% Glycerol, 0.01M PBS, PH 7.4
Concentration:	lot specific
Purification:	>95%, Protein G purified
Conjugation:	Unconjugated
Storage:	Upon receipt, store at -20°C or -80°C. Avoid repeated freeze.
Stability:	1 year from dispatch.
Database Link:	<a href="#">Q8N8W4</a>
Background:	Lipid hydrolase. Important in the formation of the epidermal lipid barrier. Plays a role in glycerophospholipid metabolism.

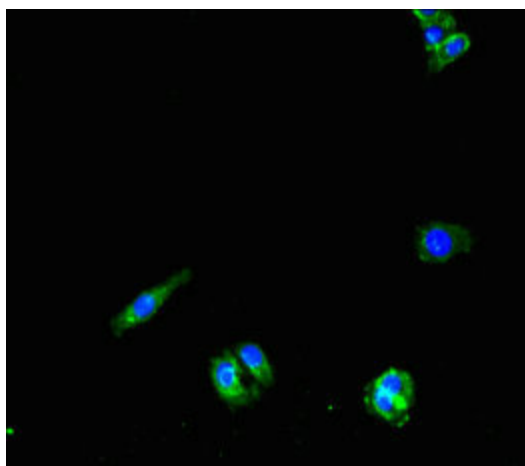


[View online »](#)

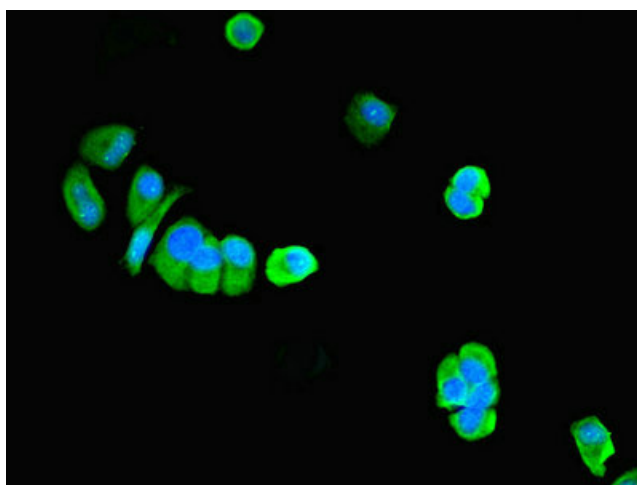
## Product images:



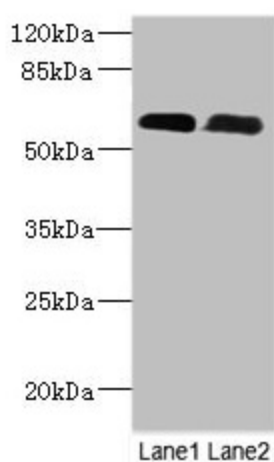
Immunohistochemistry of paraffin-embedded human kidney tissue using TA388528 at dilution of 1:100



Immunofluorescent analysis of HepG2 cells using TA388528 at dilution of 1:100 and Alexa Fluor 488-conjugated AffiniPure Goat Anti-Rabbit IgG(H+L)



Immunofluorescent analysis of MCF-7 cells using TA388528 at dilution of 1:100 and Alexa Fluor 488-conjugated AffiniPure Goat Anti-Rabbit IgG(H+L)



Western Blot  
All lanes: PNPLA1 antibody at 12µg/ml  
Lane 1: Mouse spleen tissue  
Lane 2: Mouse skeletal muscle tissue  
Secondary  
Goat polyclonal to rabbit IgG at 1/10000 dilution  
Predicted band size: 58, 48, 49 kDa  
Observed band size: 58 kDa