

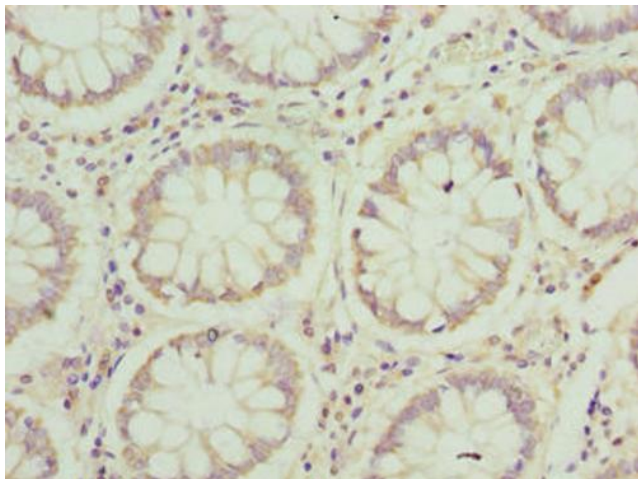
Product datasheet for **TA388525M**

JAGN1 Rabbit Polyclonal Antibody

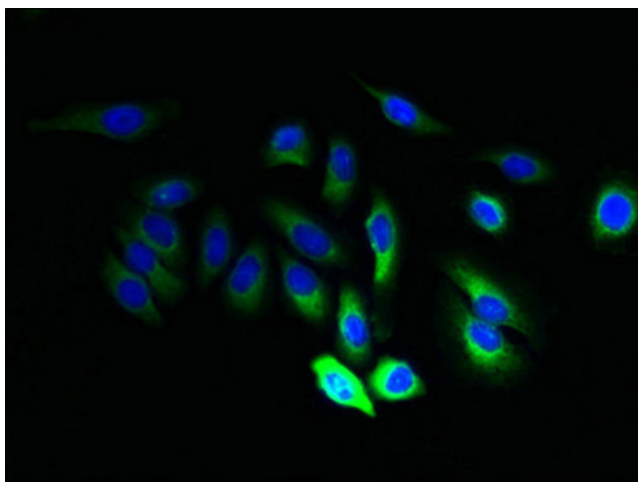
Product data:

Product Type:	Primary Antibodies
Applications:	IF, IHC, WB
Recommended Dilution:	Recommended dilution: WB:1:500-1:2000, IHC:1:20-1:200, IF:1:50-1:200
Reactivity:	Human
Host:	Rabbit
Isotype:	IgG
Clonality:	Polyclonal
Immunogen:	Recombinant Human Protein jagunal homolog 1 protein (1-39AA)
Formulation:	Preservative: 0.03% Proclin 300 Constituents: 50% Glycerol, 0.01M PBS, PH 7.4
Concentration:	lot specific
Purification:	>95%, Protein G purified
Conjugation:	Unconjugated
Storage:	Upon receipt, store at -20°C or -80°C. Avoid repeated freeze.
Stability:	1 year from dispatch.
Database Link:	Q8N5M9
Background:	Endoplasmic reticulum transmembrane protein involved in vesicle-mediated transport, which is required for neutrophil function. Required for vesicle-mediated transport; it is however unclear whether it is involved in early secretory pathway or intracellular protein transport. Acts as a regulator of neutrophil function, probably via its role in vesicle-mediated transport: required for defense against fungal pathogens and for granulocyte colony-stimulating factor (GM-CSF) signaling pathway; possibly by regulating glycosylation and/or targeting of proteins contributing to the viability and migration of neutrophils.

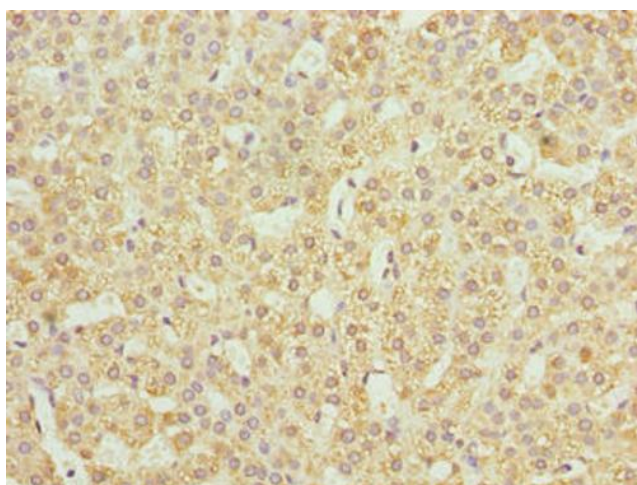
[View online »](#)

Product images:

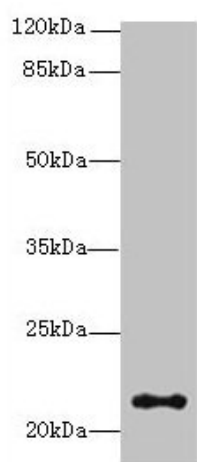
Immunohistochemistry of paraffin-embedded human colon cancer using [TA388525] at dilution of 1:100



Immunofluorescent analysis of A549 cells using [TA388525] at dilution of 1:100 and Alexa Fluor 488-conjugated AffiniPure Goat Anti-Rabbit IgG(H+L)



Immunohistochemistry of paraffin-embedded human adrenal gland tissue using [TA388525] at dilution of 1:100



Western blot
All lanes: JAGN1 antibody at 3µg/ml + HL60 whole cell lysate
Secondary
Goat polyclonal to rabbit IgG at 1/10000 dilution
Predicted band size: 22 kDa
Observed band size: 22 kDa