

## Product datasheet for **TA388524**

### **RPP25L Rabbit Polyclonal Antibody**

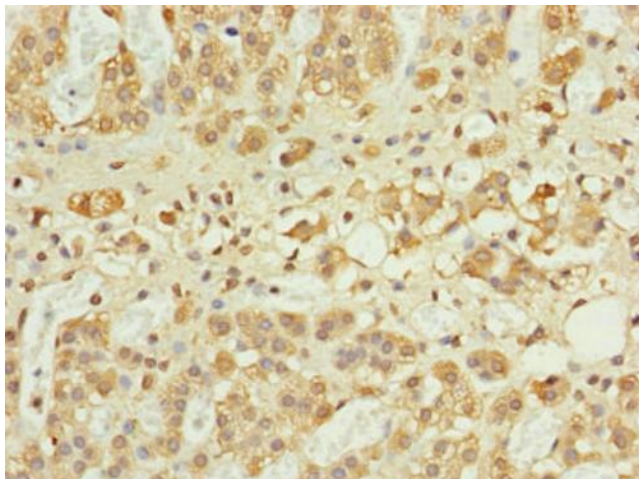
#### **Product data:**

Product Type:	Primary Antibodies
Applications:	IHC, WB
Recommended Dilution:	Recommended dilution: WB:1:1000-1:5000, IHC:1:20-1:200
Reactivity:	Mouse, Human
Host:	Rabbit
Isotype:	IgG
Clonality:	Polyclonal
Immunogen:	Recombinant Human Ribonuclease P protein subunit p25-like protein (1-163AA)
Formulation:	PBS with 0.02% sodium azide, 50% glycerol, pH7.3.
Concentration:	lot specific
Purification:	Antigen Affinity Purified
Conjugation:	Unconjugated
Storage:	Upon receipt, store at -20°C or -80°C. Avoid repeated freeze.
Stability:	1 year from dispatch.
Database Link:	<a href="#">Q8N5L8</a>
Background:	May be a component of ribonuclease P or MRP.

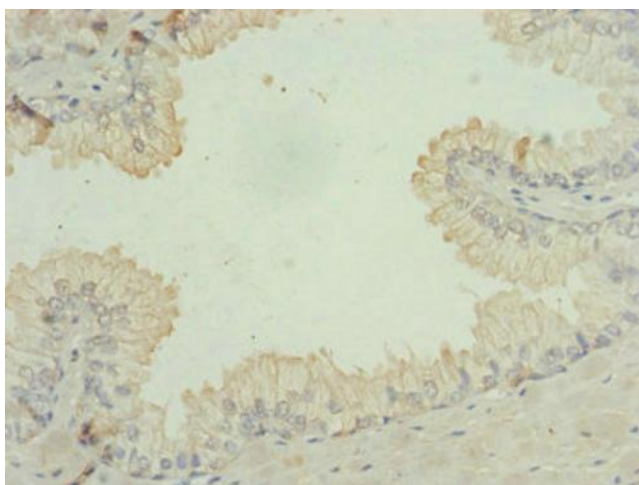


[View online »](#)

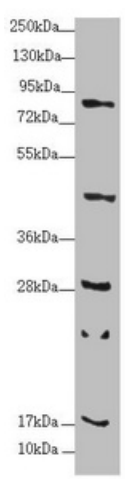
## Product images:



Immunohistochemistry of paraffin-embedded human adrenal gland tissue using TA388524 at dilution of 1:100



Immunohistochemistry of paraffin-embedded human prostate cancer using TA388524 at dilution of 1:100



Western blot

All lanes: RPP25L antibody at 1.67 µg/ml + Mouse heart tissue

Secondary

Goat polyclonal to rabbit IgG at 1/10000 dilution

Predicted band size: 18 kDa

Observed band size: 18, 24, 28, 44, 80 kDa