

Product datasheet for **TA388522**

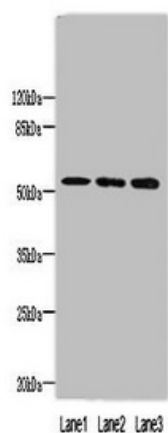
MINDY1 Rabbit Polyclonal Antibody

Product data:

Product Type:	Primary Antibodies
Applications:	WB
Recommended Dilution:	Recommended dilution: WB:1:1000-1:5000
Reactivity:	Mouse, Human
Host:	Rabbit
Isotype:	IgG
Clonality:	Polyclonal
Immunogen:	Recombinant Human Ubiquitin carboxyl-terminal hydrolase MINDY-1 protein (3-278AA)
Formulation:	Preservative: 0.03% Proclin 300 Constituents: 50% Glycerol, 0.01M PBS, PH 7.4
Concentration:	lot specific
Purification:	>95%, Protein G purified
Conjugation:	Unconjugated
Storage:	Upon receipt, store at -20°C or -80°C. Avoid repeated freeze.
Stability:	1 year from dispatch.
Database Link:	Q8N5J2
Background:	extracellular exosome, nucleoplasm, nucleus



[View online »](#)

Product images:

Western blot

All lanes: MINDY1 antibody at 8 μ g/ml

Lane 1: Mouse liver tissue

Lane 2: A549 whole cell lysate

Lane 3: HepG2 whole cell lysate

Secondary

Goat polyclonal to rabbit IgG at 1/10000 dilution

Predicted band size: 52, 37, 57, 42 kDa

Observed band size: 52 kDa