

Product datasheet for **TA388521**

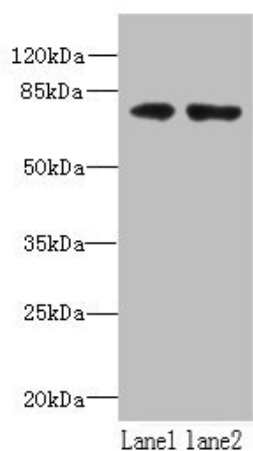
WDTC1 Rabbit Polyclonal Antibody

Product data:

Product Type:	Primary Antibodies
Applications:	WB
Recommended Dilution:	Recommended dilution: WB:1:500-1:2000
Reactivity:	Mouse, Human
Host:	Rabbit
Isotype:	IgG
Clonality:	Polyclonal
Immunogen:	Recombinant Human WD and tetratricopeptide repeats protein 1 protein (201-420AA)
Formulation:	Preservative: 0.03% Proclin 300 Constituents: 50% Glycerol, 0.01M PBS, PH 7.4
Concentration:	lot specific
Purification:	Antigen Affinity Purified
Conjugation:	Unconjugated
Storage:	Upon receipt, store at -20°C or -80°C. Avoid repeated freeze.
Stability:	1 year from dispatch.
Database Link:	Q8N5D0
Background:	May function as a substrate receptor for CUL4-DDB1 E3 ubiquitin-protein ligase complex.



[View online »](#)

Product images:

Western blot

All lanes: WDTC1 antibody at 1.5µg/ml

Lane 1: A431 whole cell lysate

Lane 2: Mouse liver tissue

Secondary

Goat polyclonal to rabbit IgG at 1/10000 dilution

Predicted band size: 76, 70, 68, 69 kDa

Observed band size: 76 kDa