

## Product datasheet for **TA388520M**

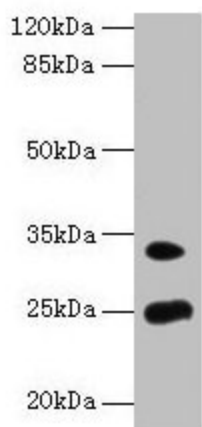
### MREG Rabbit Polyclonal Antibody

#### Product data:

Product Type:	Primary Antibodies
Applications:	WB
Recommended Dilution:	Recommended dilution: WB:1:1000-1:5000
Reactivity:	Mouse, Human
Host:	Rabbit
Isotype:	IgG
Clonality:	Polyclonal
Immunogen:	Recombinant Human Melanoregulin protein (1-214AA)
Formulation:	Preservative: 0.03% Proclin 300 Constituents: 50% Glycerol, 0.01M PBS, PH 7.4
Concentration:	lot specific
Purification:	>95%, Protein G purified
Conjugation:	Unconjugated
Storage:	Upon receipt, store at -20°C or -80°C. Avoid repeated freeze.
Stability:	1 year from dispatch.
Database Link:	<a href="#">Q8N565</a>
Background:	Plays a role in the incorporation of pigments into hair. May function in membrane fusion and regulate the biogenesis of disk membranes of photoreceptor rod cells.



[View online »](#)

**Product images:**


Western blot  
 All lanes: MREG antibody at 8 $\mu$ g/ml + Mouse  
 stomach tissue  
 Secondary  
 Goat polyclonal to rabbit IgG at 1/10000 dilution  
 Predicted band size: 25, 27 kDa  
 Observed band size: 25, 33 kDa