

## Product datasheet for **TA388517**

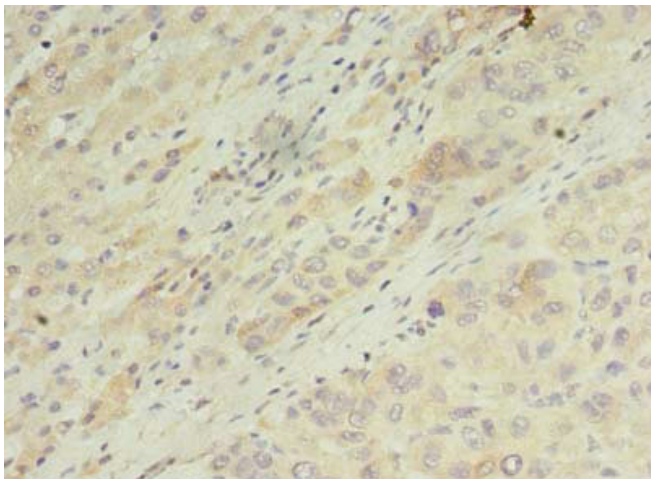
### ARL14 Rabbit Polyclonal Antibody

#### Product data:

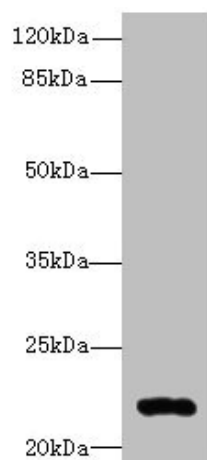
Product Type:	Primary Antibodies
Applications:	IHC, WB
Recommended Dilution:	Recommended dilution: WB:1:500-1:2000, IHC:1:20-1:200
Reactivity:	Human
Host:	Rabbit
Isotype:	IgG
Clonality:	Polyclonal
Immunogen:	Recombinant Human ADP-ribosylation factor-like protein 14 protein (2-192AA)
Formulation:	Preservative: 0.03% Proclin 300 Constituents: 50% Glycerol, 0.01M PBS, PH 7.4
Concentration:	lot specific
Purification:	Antigen Affinity Purified
Conjugation:	Unconjugated
Storage:	Upon receipt, store at -20°C or -80°C. Avoid repeated freeze.
Stability:	1 year from dispatch.
Database Link:	<a href="#">Q8N4G2</a>
Background:	GTPase that recruits MYO1E to MHC class II-containing vesicles via the effector protein ARL14EP and hence controls the movement of these vesicles along the actin cytoskeleton in dendritic cells.



[View online »](#)

**Product images:**

Immunohistochemistry of paraffin-embedded human liver cancer using TA388517 at dilution of 1:100



Western blot  
All lanes: ARL14 antibody at 0.3 $\mu$ g/ml + MCF-7 whole cell lysate  
Secondary  
Goat polyclonal to rabbit IgG at 1/10000 dilution  
Predicted band size: 22 kDa  
Observed band size: 22 kDa