

Product datasheet for **TA388509**

SHISA5 Rabbit Polyclonal Antibody

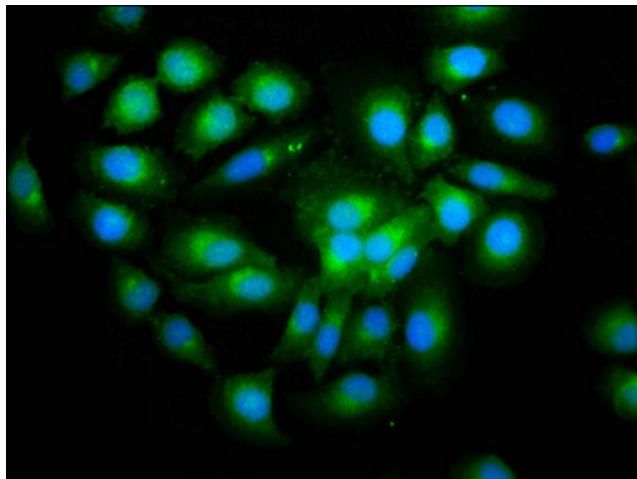
Product data:

Product Type:	Primary Antibodies
Applications:	IF, IHC, IP
Recommended Dilution:	Recommended dilution: IHC:1:20-1:200, IF:1:50-1:500, IP:1:200-1:2000
Reactivity:	Human
Host:	Rabbit
Isotype:	IgG
Clonality:	Polyclonal
Immunogen:	Recombinant Human Protein shisa-5 protein (56-137AA)
Formulation:	Preservative: 0.03% Proclin 300 Constituents: 50% Glycerol, 0.01M PBS, PH 7.4
Concentration:	lot specific
Purification:	>95%, Protein G purified
Conjugation:	Unconjugated
Storage:	Upon receipt, store at -20°C or -80°C. Avoid repeated freeze.
Stability:	1 year from dispatch.
Database Link:	Q8N114
Background:	Can induce apoptosis in a caspase-dependent manner and plays a role in p53/TP53-dependent apoptosis.

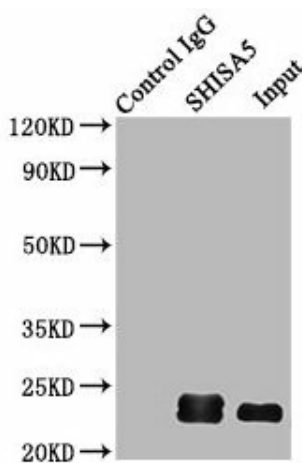


[View online »](#)

Product images:



Immunofluorescence staining of A549 cells with TA388509 at 1:200, counter-stained with DAPI. The cells were fixed in 4% formaldehyde, permeabilized using 0.2% Triton X-100 and blocked in 10% normal Goat Serum. The cells were then incubated with the antibody overnight at 4°C. The secondary antibody was Alexa Fluor 488-conjugated AffiniPure Goat Anti-Rabbit IgG(H+L).

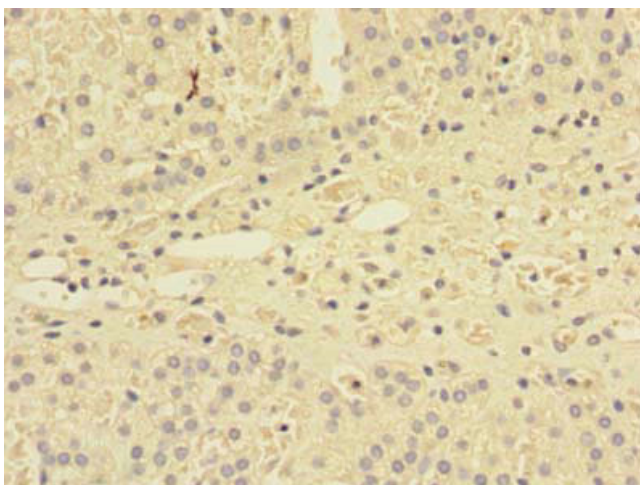


Immunoprecipitating SHISA5 in HepG2 whole cell lysate

Lane 1: Rabbit control IgG (1 μ g) instead of TA388509 in HepG2 whole cell lysate. For western blotting, a HRP-conjugated Protein G antibody was used as the secondary antibody (1/2000)

Lane 2: TA388509 (6 μ g) + HepG2 whole cell lysate (500 μ g)

Lane 3: HepG2 whole cell lysate (10 μ g)



Immunohistochemistry of paraffin-embedded human adrenal gland tissue using TA388509 at dilution of 1:100