

Product datasheet for **TA388507**

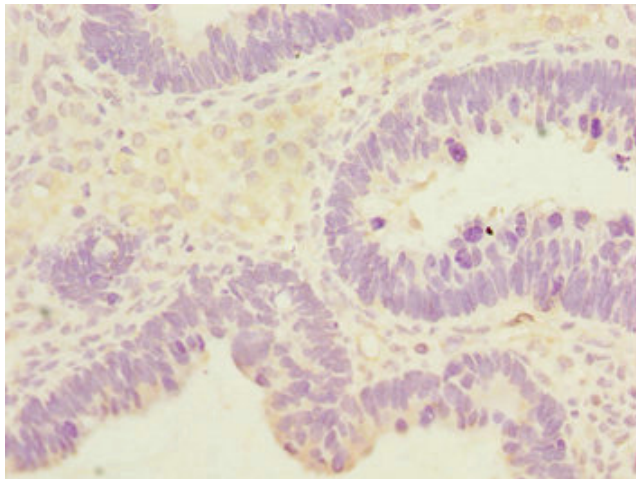
SYCE1 Rabbit Polyclonal Antibody

Product data:

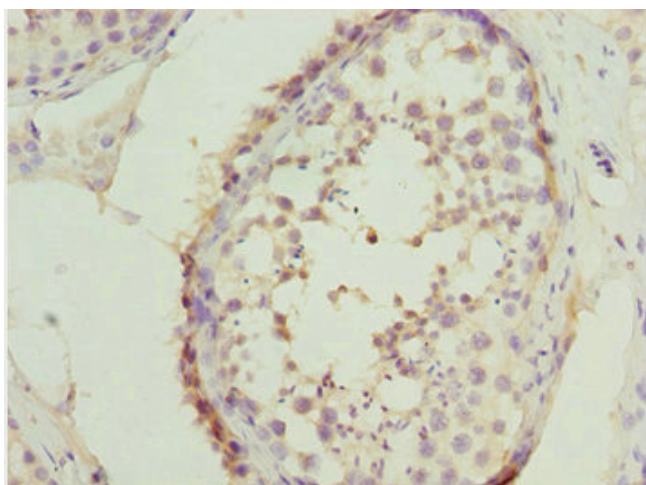
Product Type:	Primary Antibodies
Applications:	IHC, WB
Recommended Dilution:	Recommended dilution: WB:1:1000-1:5000, IHC:1:20-1:200
Reactivity:	Mouse, Human
Host:	Rabbit
Isotype:	IgG
Clonality:	Polyclonal
Immunogen:	Recombinant Human Synaptonemal complex central element protein 1 protein (132-351AA)
Formulation:	PBS with 0.02% sodium azide, 50% glycerol, pH7.3.
Concentration:	lot specific
Purification:	Antigen Affinity Purified
Conjugation:	Unconjugated
Storage:	Upon receipt, store at -20°C or -80°C. Avoid repeated freeze.
Stability:	1 year from dispatch.
Database Link:	<u>Q8N0S2</u>
Background:	Major component of the transverse central element of synaptonemal complexes (SCS), formed between homologous chromosomes during meiotic prophase. Requires SYCP1 in order to be incorporated into the central element. May have a role in the synaptonemal complex assembly, stabilization and recombination (By similarity).



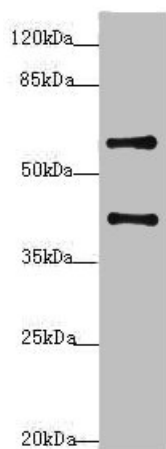
[View online »](#)

Product images:

Immunohistochemistry of paraffin-embedded human ovarian cancer using TA388507 at dilution of 1:100



Immunohistochemistry of paraffin-embedded human testis tissue using TA388507 at dilution of 1:100



Western blot

All lanes: SYCE1 antibody at 3.38 μ g/ml + Mouse liver tissue

Secondary

Goat polyclonal to rabbit IgG at 1/10000 dilution

Predicted band size: 40, 33, 22 kDa

Observed band size: 40, 58 kDa