

## Product datasheet for **TA388505M**

### **NRSN1 Rabbit Polyclonal Antibody**

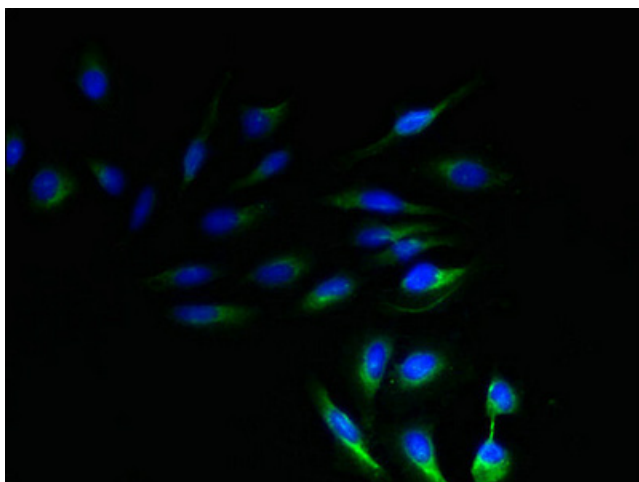
#### **Product data:**

Product Type:	Primary Antibodies
Applications:	IF, WB
Recommended Dilution:	Recommended dilution: WB:1:1000-1:5000, IF:1:50-1:200
Reactivity:	Mouse, Human
Host:	Rabbit
Isotype:	IgG
Clonality:	Polyclonal
Immunogen:	Recombinant Human Neurensin-1 protein (1-65AA)
Formulation:	Preservative: 0.03% Proclin 300 Constituents: 50% Glycerol, 0.01M PBS, PH 7.4
Concentration:	lot specific
Purification:	>95%, Protein G purified
Conjugation:	Unconjugated
Storage:	Upon receipt, store at -20°C or -80°C. Avoid repeated freeze.
Stability:	1 year from dispatch.
Database Link:	<a href="#">Q8IZ57</a>
Background:	May play an important role in neural organelle transport, and in transduction of nerve signals or in nerve growth. May play a role in neurite extension.

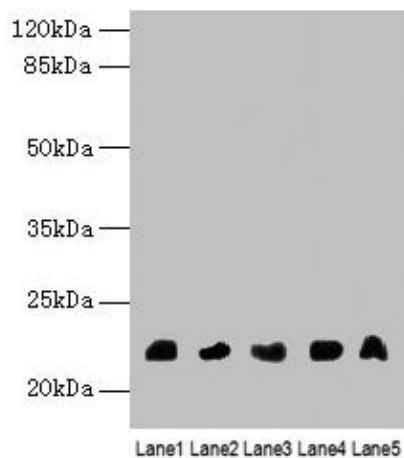


[View online »](#)

## Product images:



Immunofluorescent analysis of HeLa cells using [TA388505] at dilution of 1:100 and Alexa Fluor 488-conjugated AffiniPure Goat Anti-Rabbit IgG(H+L)



Western blot  
All lanes: NRSN1 antibody at 3 $\mu$ g/ml  
Lane 1: Mouse stomach tissue  
Lane 2: Mouse kidney tissue  
Lane 3: Mouse thymus tissue  
Lane 4: HeLa whole cell lysate  
Lane 5: 293T whole cell lysate  
Secondary  
Goat polyclonal to rabbit IgG at 1/10000 dilution  
Predicted band size: 22 kDa  
Observed band size: 22 kDa