

## Product datasheet for **TA388501M**

### **ZBTB8OS Rabbit Polyclonal Antibody**

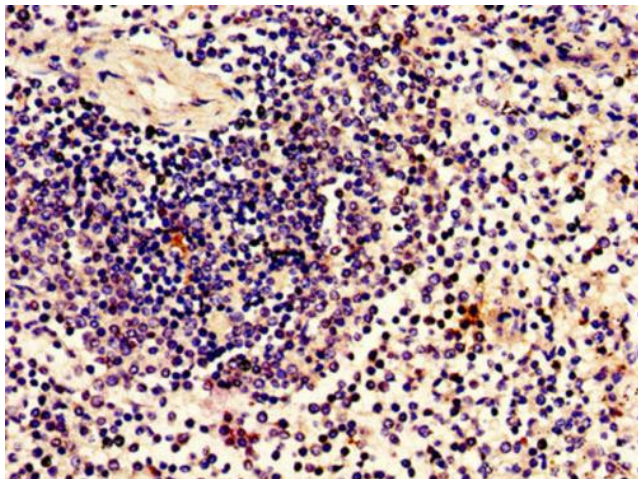
#### **Product data:**

Product Type:	Primary Antibodies
Applications:	IF, IHC, WB
Recommended Dilution:	Recommended dilution: WB:1:500-1:2000, IHC:1:20-1:200, IF:1:50-1:200
Reactivity:	Human
Host:	Rabbit
Isotype:	IgG
Clonality:	Polyclonal
Immunogen:	Recombinant Human Protein archease protein (2-136AA)
Formulation:	Preservative: 0.03% Proclin 300 Constituents: 50% Glycerol, 0.01M PBS, PH 7.4
Concentration:	lot specific
Purification:	>95%, Protein G purified
Conjugation:	Unconjugated
Storage:	Upon receipt, store at -20°C or -80°C. Avoid repeated freeze.
Stability:	1 year from dispatch.
Database Link:	<a href="#">Q8IWT0</a>
Background:	Component of the tRNA-splicing ligase complex required to facilitate the enzymatic turnover of catalytic subunit RTCB. Together with DDX1, acts by facilitating the guanylation of RTCB, a key intermediate step in tRNA ligation.

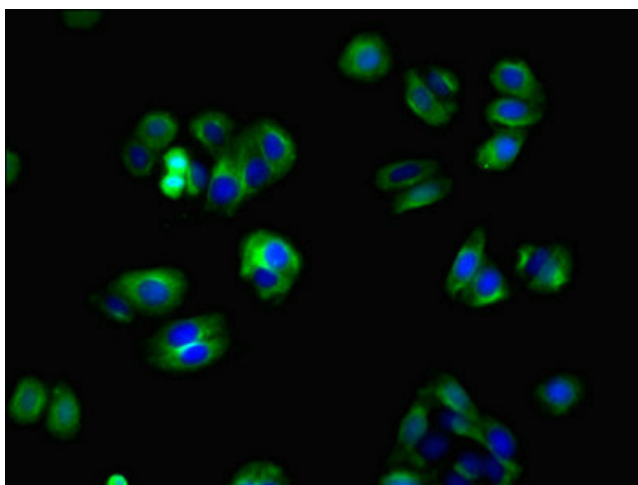


[View online »](#)

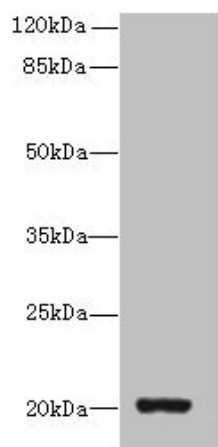
## Product images:



Immunohistochemistry of paraffin-embedded human spleen tissue using [TA388501] at dilution of 1:100



Immunofluorescent analysis of HepG2 cells using [TA388501] at dilution of 1:100 and Alexa Fluor 488-conjugated AffiniPure Goat Anti-Rabbit IgG(H+L)



Western blot

All lanes: ZBTB8OS antibody at 8 $\mu$ g/ml + HL60 whole cell lysate

Secondary

Goat polyclonal to rabbit IgG at 1/10000 dilution

Predicted band size: 20, 16 kDa

Observed band size: 20 kDa