

## Product datasheet for **TA388498**

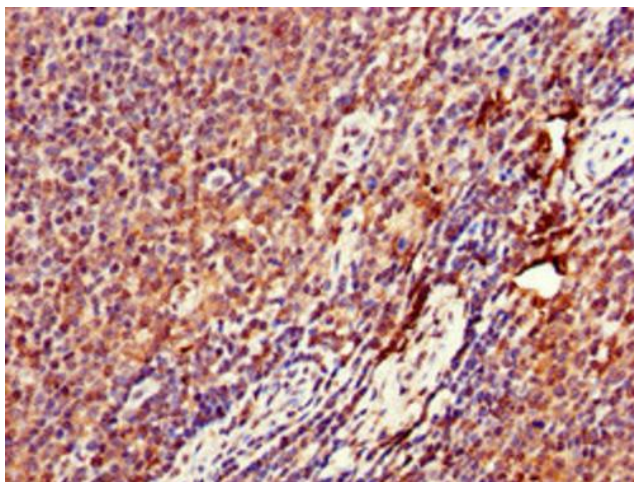
### DENND1C Rabbit Polyclonal Antibody

#### Product data:

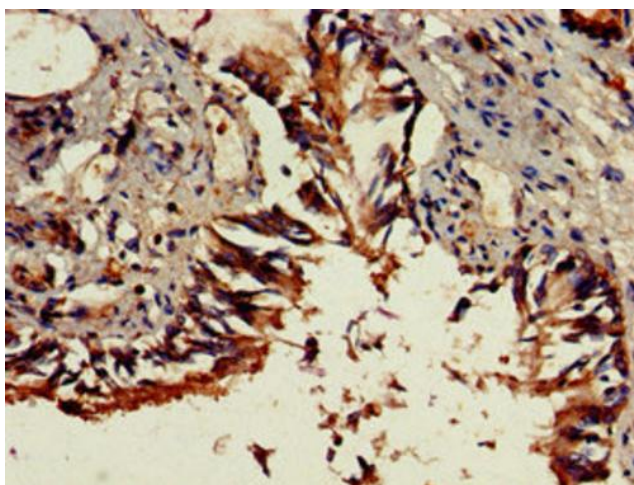
Product Type:	Primary Antibodies
Applications:	IHC, WB
Recommended Dilution:	Recommended dilution: WB:1:500-1:5000, IHC:1:20-1:200
Reactivity:	Rat, Human
Host:	Rabbit
Isotype:	IgG
Clonality:	Polyclonal
Immunogen:	Recombinant Human DENN domain-containing protein 1C protein (601-801AA)
Formulation:	Preservative: 0.03% Proclin 300 Constituents: 50% Glycerol, 0.01M PBS, pH 7.4
Concentration:	lot specific
Purification:	>95%, Protein G purified
Conjugation:	Unconjugated
Storage:	Upon receipt, store at -20°C or -80°C. Avoid repeated freeze.
Stability:	1 year from dispatch.
Database Link:	<a href="#">Q8IV53</a>
Background:	Guanine nucleotide exchange factor (GEF) which may activate RAB8A, RAB13 and RAB35. Promotes the exchange of GDP to GTP, converting inactive GDP-bound Rab proteins into their active GTP-bound form.



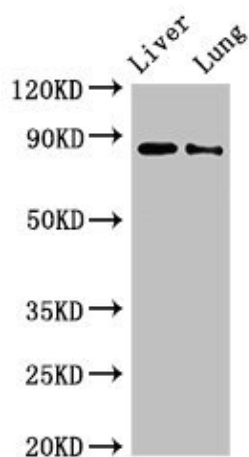
[View online »](#)

**Product images:**

Immunohistochemistry of paraffin-embedded human lymph node tissue using TA388498 at dilution of 1:100



Immunohistochemistry of paraffin-embedded human lung tissue using TA388498 at dilution of 1:100



Western Blot

Positive WB detected in: Rat liver tissue, Rat lung tissue

All lanes: DENND1C antibody at 3 $\mu$ g/ml

Secondary

Goat polyclonal to rabbit IgG at 1/50000 dilution

Predicted band size: 88, 83 kDa

Observed band size: 88 kDa