

Product datasheet for **TA388497**

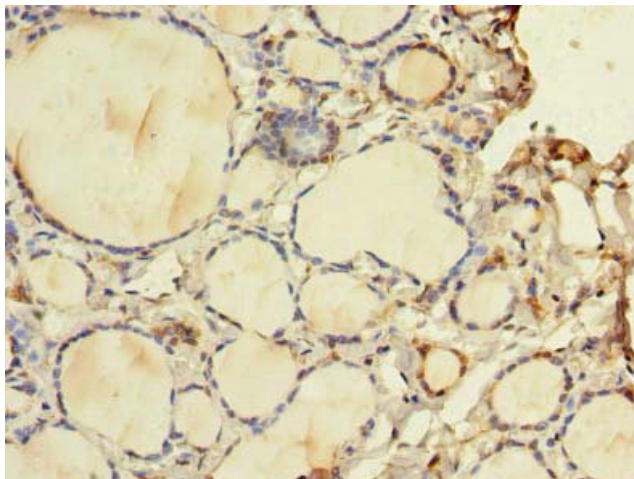
WDR49 Rabbit Polyclonal Antibody

Product data:

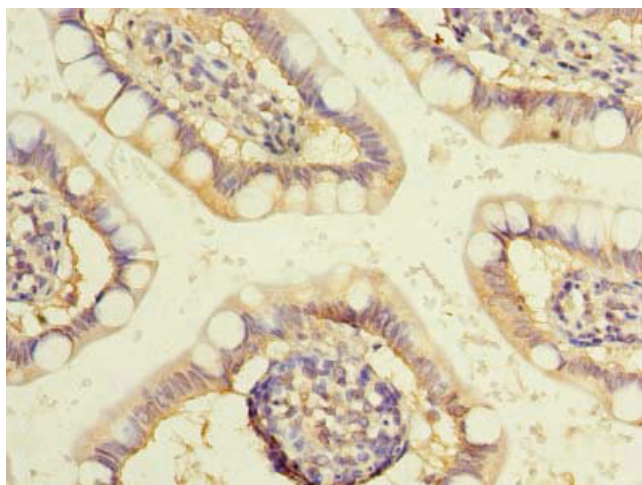
Product Type:	Primary Antibodies
Applications:	IHC, WB
Recommended Dilution:	Recommended dilution: WB:1:500-1:2000, IHC:1:20-1:200
Reactivity:	Human
Host:	Rabbit
Isotype:	IgG
Clonality:	Polyclonal
Immunogen:	Recombinant Human WD repeat-containing protein 49 protein (251-500AA)
Formulation:	Preservative: 0.03% Proclin 300 Constituents: 50% Glycerol, 0.01M PBS, PH 7.4
Concentration:	lot specific
Purification:	>95%, Protein G purified
Conjugation:	Unconjugated
Storage:	Upon receipt, store at -20°C or -80°C. Avoid repeated freeze.
Stability:	1 year from dispatch.
Database Link:	Q8IV35



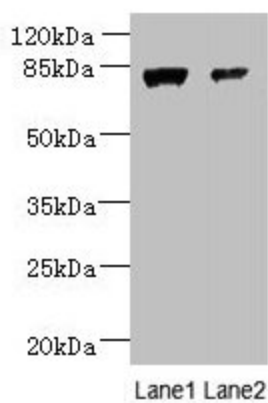
[View online »](#)

Product images:

Immunohistochemistry of paraffin-embedded human thyroid tissue using TA388497 at dilution of 1:100



Immunohistochemistry of paraffin-embedded human small intestine tissue using TA388497 at dilution of 1:100



Western blot

All lanes: WDR49 antibody at 7 μ g/ml

Lane 1: A549 whole cell lysate

Lane 2: HeLa whole cell lysate

Secondary

Goat polyclonal to rabbit IgG at 1/10000 dilution

Predicted band size: 80, 60 kDa

Observed band size: 80 kDa