

Product datasheet for **TA388493M**

C17orf64 Rabbit Polyclonal Antibody

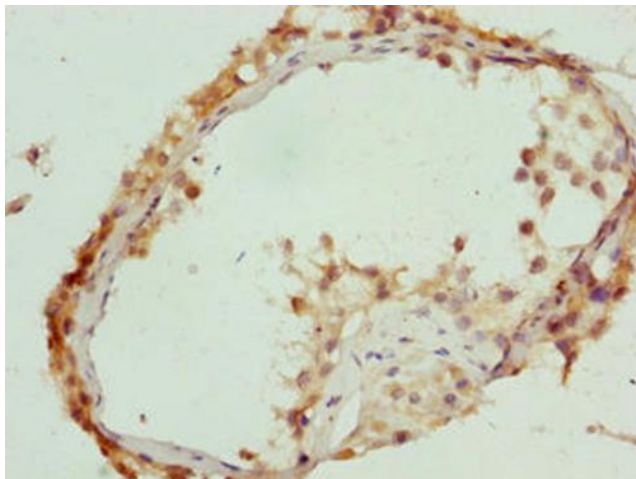
Product data:

Product Type:	Primary Antibodies
Applications:	IHC, WB
Recommended Dilution:	Recommended dilution: WB:1:1000-1:5000, IHC:1:20-1:200
Reactivity:	Mouse, Human
Host:	Rabbit
Isotype:	IgG
Clonality:	Polyclonal
Immunogen:	Recombinant Human Uncharacterized protein C17orf64 protein (111-236AA)
Formulation:	Preservative: 0.03% Proclin 300 Constituents: 50% Glycerol, 0.01M PBS, PH 7.4
Concentration:	lot specific
Purification:	>95%, Protein G purified
Conjugation:	Unconjugated
Storage:	Upon receipt, store at -20°C or -80°C. Avoid repeated freeze.
Stability:	1 year from dispatch.
Database Link:	Q86WR6

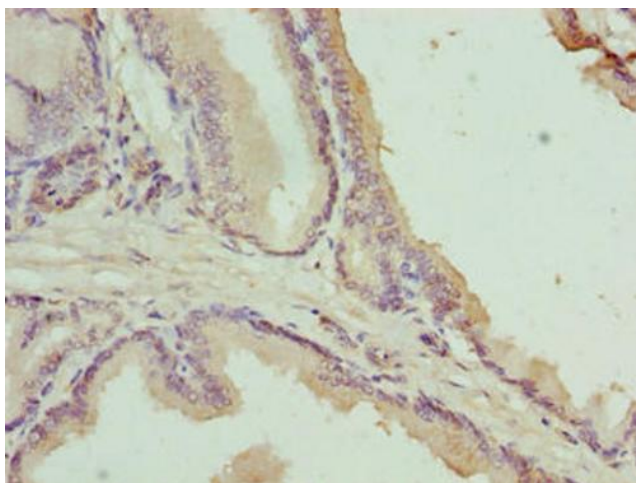


[View online »](#)

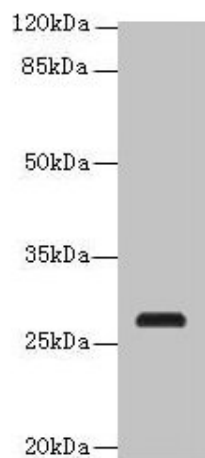
Product images:



Immunohistochemistry of paraffin-embedded human testis tissue using [TA388493] at dilution of 1:100



Immunohistochemistry of paraffin-embedded human prostate cancer using [TA388493] at dilution of 1:100



Western blot
 All lanes: C17orf64 antibody at 4µg/ml + Mouse gonadal tissue
 Secondary
 Goat polyclonal to rabbit IgG at 1/10000 dilution
 Predicted band size: 28 kDa
 Observed band size: 28 kDa