

## Product datasheet for **TA388493**

### **C17orf64 Rabbit Polyclonal Antibody**

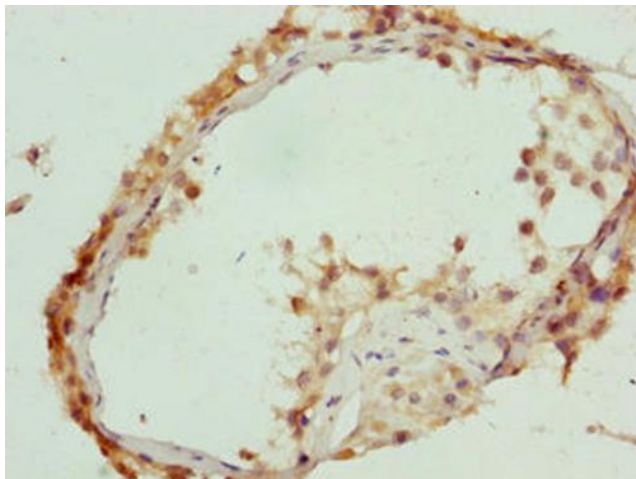
#### **Product data:**

Product Type:	Primary Antibodies
Applications:	IHC, WB
Recommended Dilution:	Recommended dilution: WB:1:1000-1:5000, IHC:1:20-1:200
Reactivity:	Mouse, Human
Host:	Rabbit
Isotype:	IgG
Clonality:	Polyclonal
Immunogen:	Recombinant Human Uncharacterized protein C17orf64 protein (111-236AA)
Formulation:	Preservative: 0.03% Proclin 300 Constituents: 50% Glycerol, 0.01M PBS, PH 7.4
Concentration:	lot specific
Purification:	>95%, Protein G purified
Conjugation:	Unconjugated
Storage:	Upon receipt, store at -20°C or -80°C. Avoid repeated freeze.
Stability:	1 year from dispatch.
Database Link:	<a href="#">Q86WR6</a>

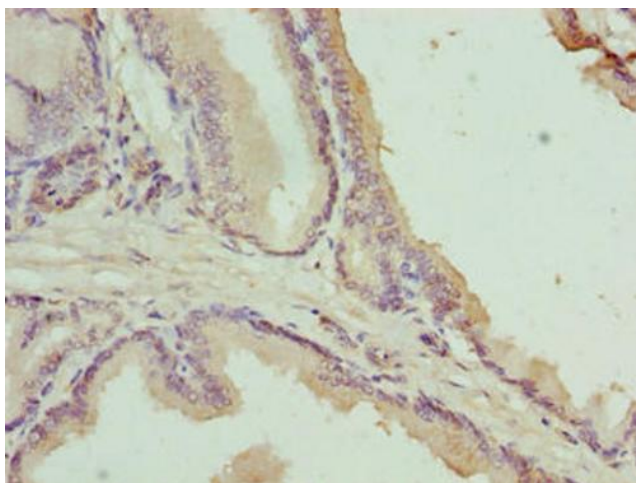


[View online »](#)

**Product images:**



Immunohistochemistry of paraffin-embedded human testis tissue using TA388493 at dilution of 1:100



Immunohistochemistry of paraffin-embedded human prostate cancer using TA388493 at dilution of 1:100



Western blot

All lanes: C17orf64 antibody at 4µg/ml + Mouse gonadal tissue

Secondary

Goat polyclonal to rabbit IgG at 1/10000 dilution

Predicted band size: 28 kDa

Observed band size: 28 kDa