

Product datasheet for **TA388488M**

MTERF4 Rabbit Polyclonal Antibody

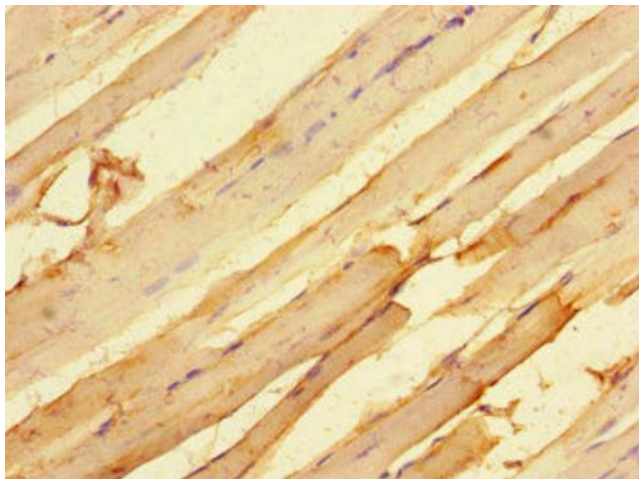
Product data:

Product Type:	Primary Antibodies
Applications:	IF, IHC, WB
Recommended Dilution:	Recommended dilution: WB:1:1000-1:5000, IHC:1:20-1:200, IF:1:50-1:200
Reactivity:	Mouse, Human
Host:	Rabbit
Isotype:	IgG
Clonality:	Polyclonal
Immunogen:	Recombinant Human Transcription termination factor 4, mitochondrial protein (45-87AA)
Formulation:	Preservative: 0.03% Proclin 300 Constituents: 50% Glycerol, 0.01M PBS, PH 7.4
Concentration:	lot specific
Purification:	>95%, Protein G purified
Conjugation:	Unconjugated
Storage:	Upon receipt, store at -20°C or -80°C. Avoid repeated freeze.
Stability:	1 year from dispatch.
Database Link:	Q7Z6M4
Background:	Regulator of mitochondrial ribosome biogenesis and translation. Binds to mitochondrial ribosomal RNAs 16S, 12S and 7S and targets NSUN4 RNA methyltransferase to the mitochondrial large ribosomal subunit (39S).

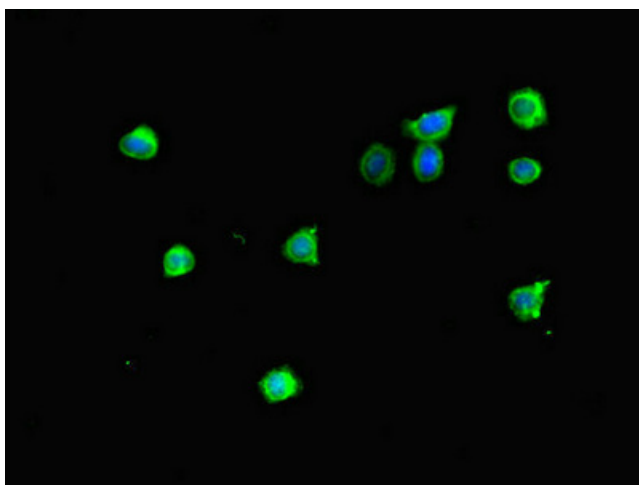


[View online »](#)

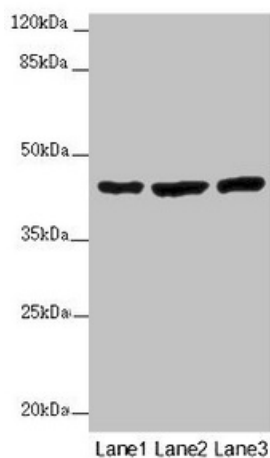
Product images:



Immunohistochemistry of paraffin-embedded human skeletal muscle tissue using [TA388488] at dilution of 1:100



Immunofluorescent analysis of HepG2 cells using [TA388488] at dilution of 1:100 and Alexa Fluor 488-conjugated AffiniPure Goat Anti-Rabbit IgG(H+L)



Western blot

All lanes: MTERF4 antibody at 2 µg/ml

Lane 1: Mouse kidney tissue

Lane 2: HL60 whole cell lysate

Lane 3: A549 whole cell lysate

Secondary

Goat polyclonal to rabbit IgG at 1/10000 dilution

Predicted band size: 44 kDa

Observed band size: 44 kDa