

## Product datasheet for **TA388488**

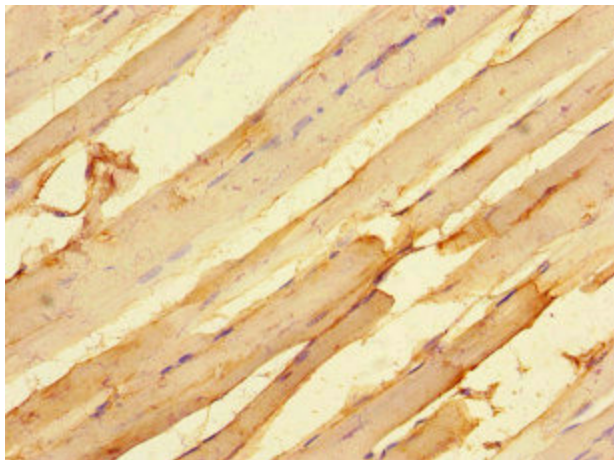
### **MTERF4 Rabbit Polyclonal Antibody**

#### **Product data:**

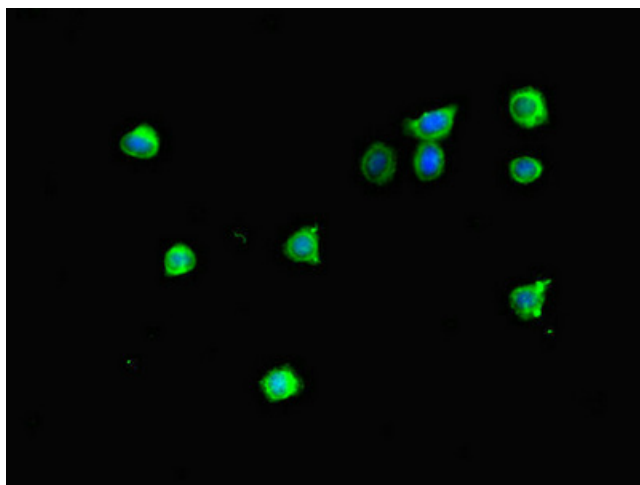
<b>Product Type:</b>	Primary Antibodies
<b>Applications:</b>	IF, IHC, WB
<b>Recommended Dilution:</b>	Recommended dilution: WB:1:1000-1:5000, IHC:1:20-1:200, IF:1:50-1:200
<b>Reactivity:</b>	Mouse, Human
<b>Host:</b>	Rabbit
<b>Isotype:</b>	IgG
<b>Clonality:</b>	Polyclonal
<b>Immunogen:</b>	Recombinant Human Transcription termination factor 4, mitochondrial protein (45-87AA)
<b>Formulation:</b>	Preservative: 0.03% Proclin 300 Constituents: 50% Glycerol, 0.01M PBS, PH 7.4
<b>Concentration:</b>	lot specific
<b>Purification:</b>	>95%, Protein G purified
<b>Conjugation:</b>	Unconjugated
<b>Storage:</b>	Upon receipt, store at -20°C or -80°C. Avoid repeated freeze.
<b>Stability:</b>	1 year from dispatch.
<b>Database Link:</b>	<a href="#">Q7Z6M4</a>
<b>Background:</b>	Regulator of mitochondrial ribosome biogenesis and translation. Binds to mitochondrial ribosomal RNAs 16S, 12S and 7S and targets NSUN4 RNA methyltransferase to the mitochondrial large ribosomal subunit (39S).



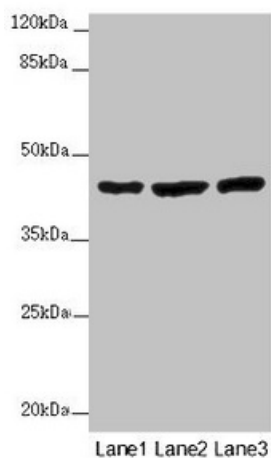
[View online »](#)

**Product images:**

Immunohistochemistry of paraffin-embedded human skeletal muscle tissue using TA388488 at dilution of 1:100



Immunofluorescent analysis of HepG2 cells using TA388488 at dilution of 1:100 and Alexa Fluor 488-conjugated AffiniPure Goat Anti-Rabbit IgG(H+L)



Western blot

All lanes: MTERF4 antibody at 2  $\mu\text{g/ml}$

Lane 1: Mouse kidney tissue

Lane 2: HL60 whole cell lysate

Lane 3: A549 whole cell lysate

Secondary

Goat polyclonal to rabbit IgG at 1/10000 dilution

Predicted band size: 44 kDa

Observed band size: 44 kDa